

3<sup>rd</sup> prize, Topic 2 Tertiary Category

## Jalan Jalan

### **Team members:**

Shawn Peck                      Onn Ying Jia  
Jence Helin Caballa      Darrien Wu Junhan  
(National University of Singapore)

### **Participants' Write Up:**

The proposal envisages Old Changi Hospital as a time capsule that is set to open up locked memories with the proposed drive-in theatre, exhibition and workshop spaces for dying trades and crafts such as batik, rattan and lantern making. The submission also introduces steel grids to the building façade to provide sheltered and shaded areas on the extended terraces for activities to spill over, as well as accessibility ramps for a barrier-free entry to the buildings.

### **Jury Citation:**

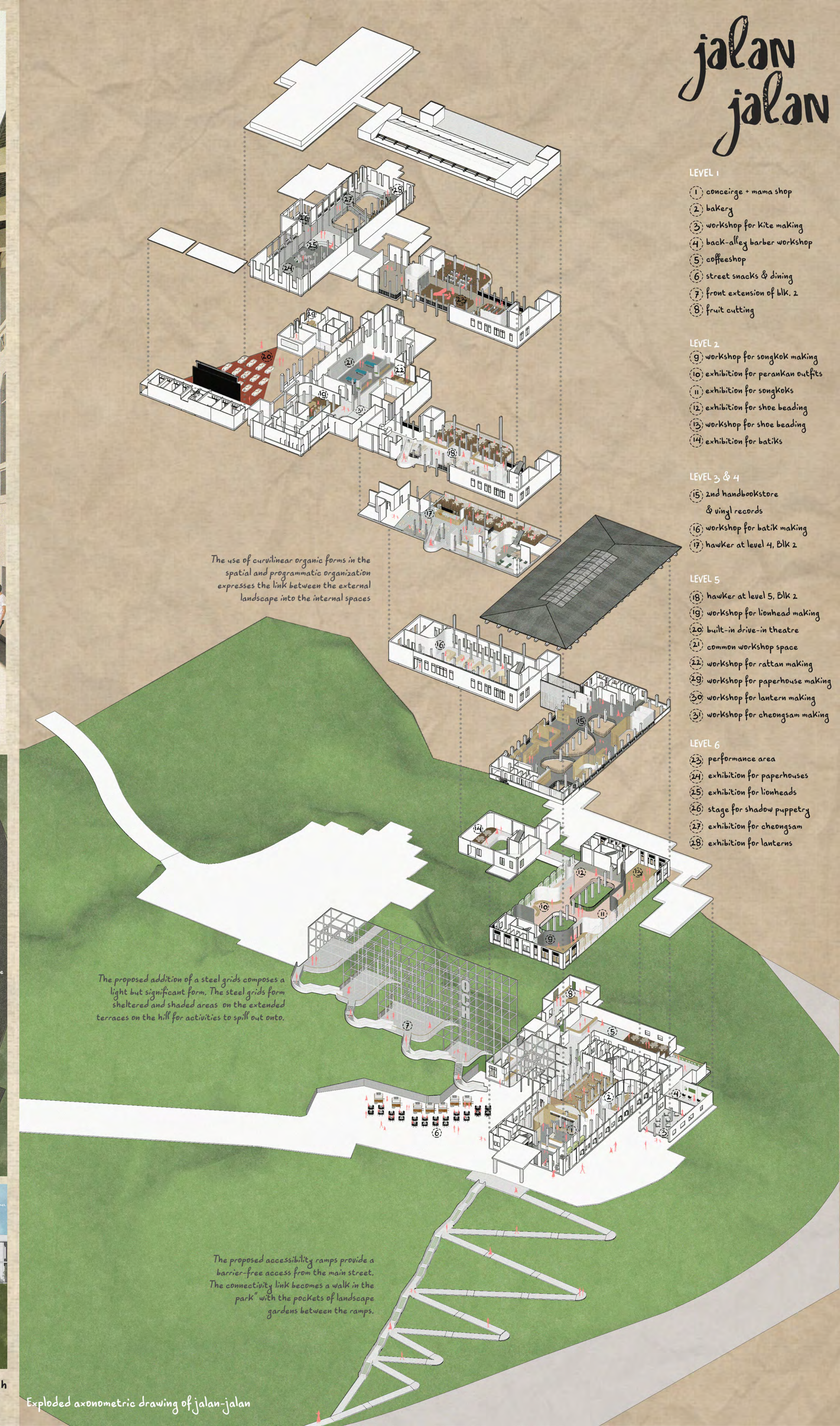
The jury commended the proposal and its representations in creating a sense of nostalgia. The thoughtful curation of programming involving the promotion and aggregation of endangered historical trades and crafts stood out to the jury. The introduction of steel grids to the building façade was a provocative gesture, but overall the jury commented that the architectural interventions made good use of existing features to accommodate new uses.





Entrance Ramp / Universal design entrance to allow ease of accessibility into the building for all visitors.

Block 2 / Engagement of surrounding environment with the integration floor's spatial interior programme.



Exploded axonometric drawing of jalan-jalan





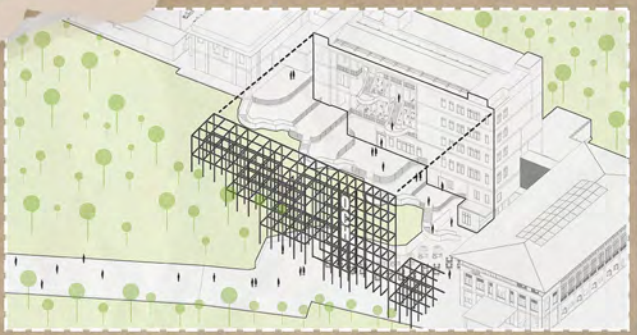
Architectural extensions on east and west facade, further enhancing the transitory link between Blocks 1 and 3

Addition of skylight and atrium voids, improving spatial daylighting and providing visual connectivity through all levels

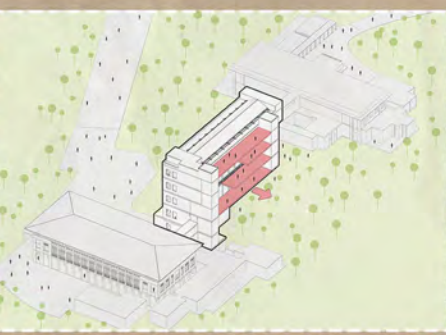
Implementation of activity generating uses in both interior and exterior levels.

Sectional perspective drawing of jalan-jalan

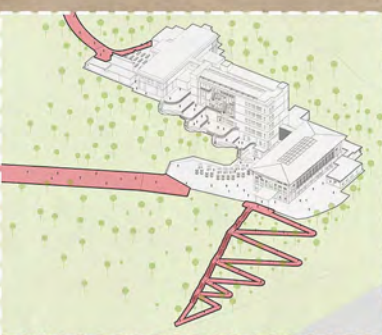
The dying trades and crafts help re-live past memories through visual reminiscence, with hands-on learning for such skills to be passed onto, creating new memories alongside the rich history of the past Singapore. This forms a dynamical space for both the past and the present.



Block 2 / Facade extension



Block 2 / Floorplate extension



Entrance Proposal



Spatial Programmatic Placement



Curvilinear Forms

With Singapore's rapid transformation over the years, many choosing a monotonous pursuit of momentary happiness, looking away valuable memories of various traditions and irreplaceable experiences with their loved ones. Traditions and our celebrated local crafts are notably vanishing along with our memories. Current buildings, preserved or not, are like an empty shell, void of said memories. Therefore, it is becoming increasingly important to preserve not only buildings but also the trades and practices that take place within them.

Hidden away from the public realm, the hospital can be perceived as a time capsule. Just like how a time capsule works, the "Jalan-Jalan" project proposal is set to open up locked memories, allowing users to re-live, enrich and comfort themselves through the intergenerational experiential learning.

