

2nd prize, Topic 2 Tertiary Category

Changi Point Ecological Hub

Team members:

Ryan Quah Kun Hao Choy Rui Zhi
Tang Wei Gregory Wong Jia Wei
(National University of Singapore)

Participants' Write Up:

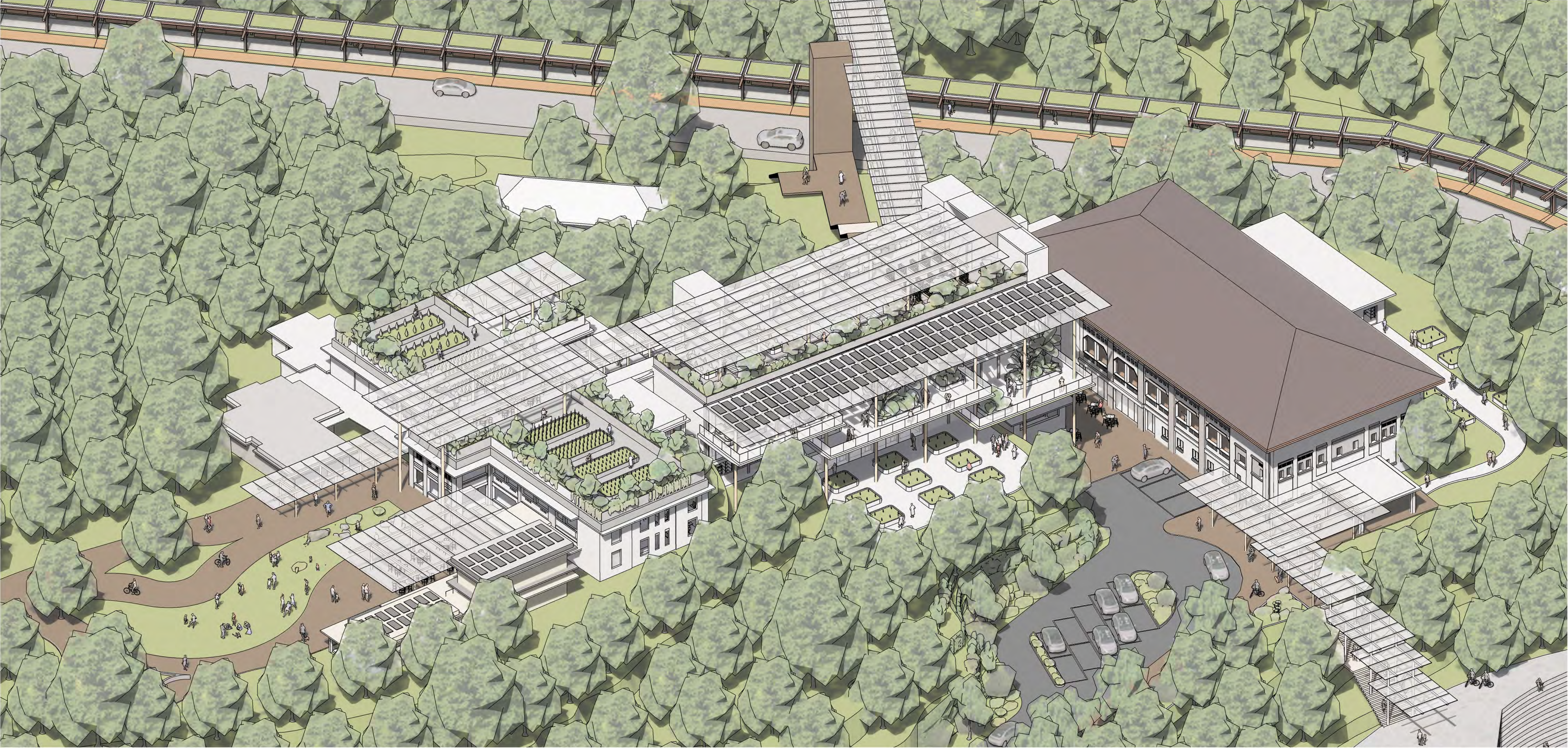
The proposal reimagines the Old Changi Hospital as an Ecological Hub that provides differentiated experiences across its three blocks. Visitors can learn about its past as a colonial hospital and wartime prison, experience its present as a lush forest rich in flora and fauna, and discover a future of an eco-centric lifestyle with nature.

As a historical landmark of Changi Point, its distinctive architectural features are conserved. Underused spaces such as the roof are reintroduced as urban farms with lightweight roof canopies, while existing floor slabs are extended to double as experimental testbeds and eco-classrooms. To champion the rich history and unique geography, old interiors are redesigned to form gallery spaces that flow across the three blocks. Voids are carved to accentuate the unique roof structure of Block 24, while the atrium of Block 161 draws visitors out to its balcony spaces with a glass facade that frames a sweeping view of the village. The old driveway of Block 37 is revitalised as a courtyard that functions as a pitstop and an event space.

The Changi Point Ecological Hub begins with an introduction on its vast biodiversity and heritage. The visitors are taken through its heyday of colonial settlement with the preserved hospital wards and visual gallery. Traversing through the ecological labs, they discover and learn the potential of urban farming and sustainable living.

Jury Citation:

The jury commended the proposal for its detailed representation of architectural interventions and the successful integration of the old and new especially for the building façade. The submission demonstrated an eco-centric approach while balancing the preservation of heritage. The proposed eco research and learning hub was as a suitable and sensitive use of the space. The submission could be strengthened by tying in the interventions more closely to ecology in the Changi-Ubin area.



Changi Point Ecological Hub

learn, discover, connect

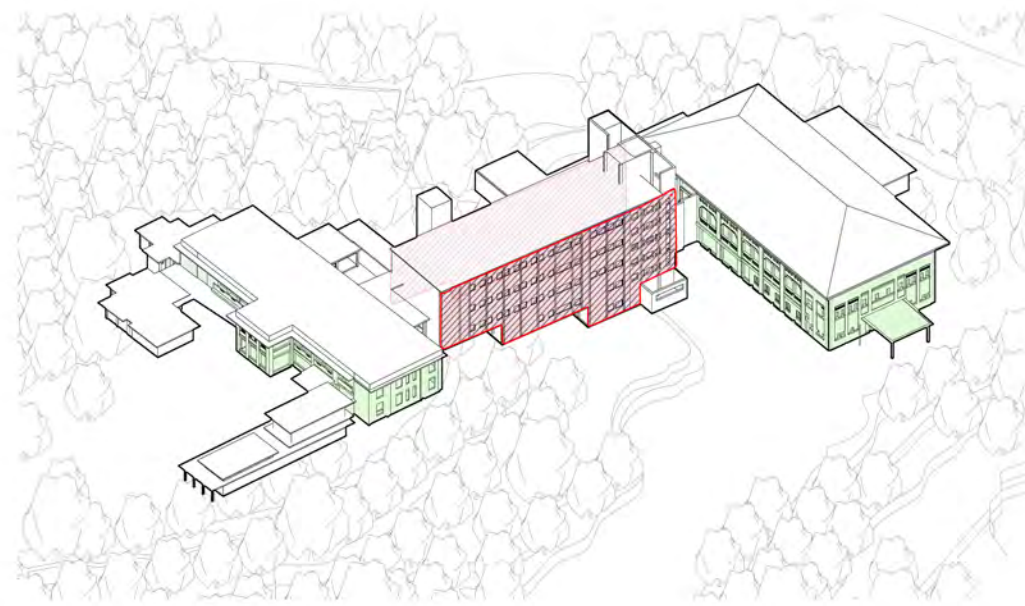
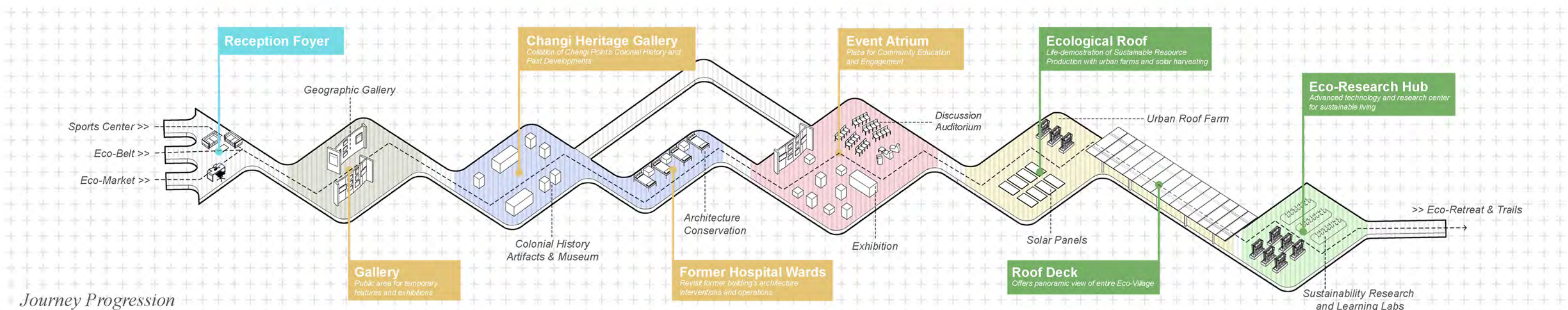
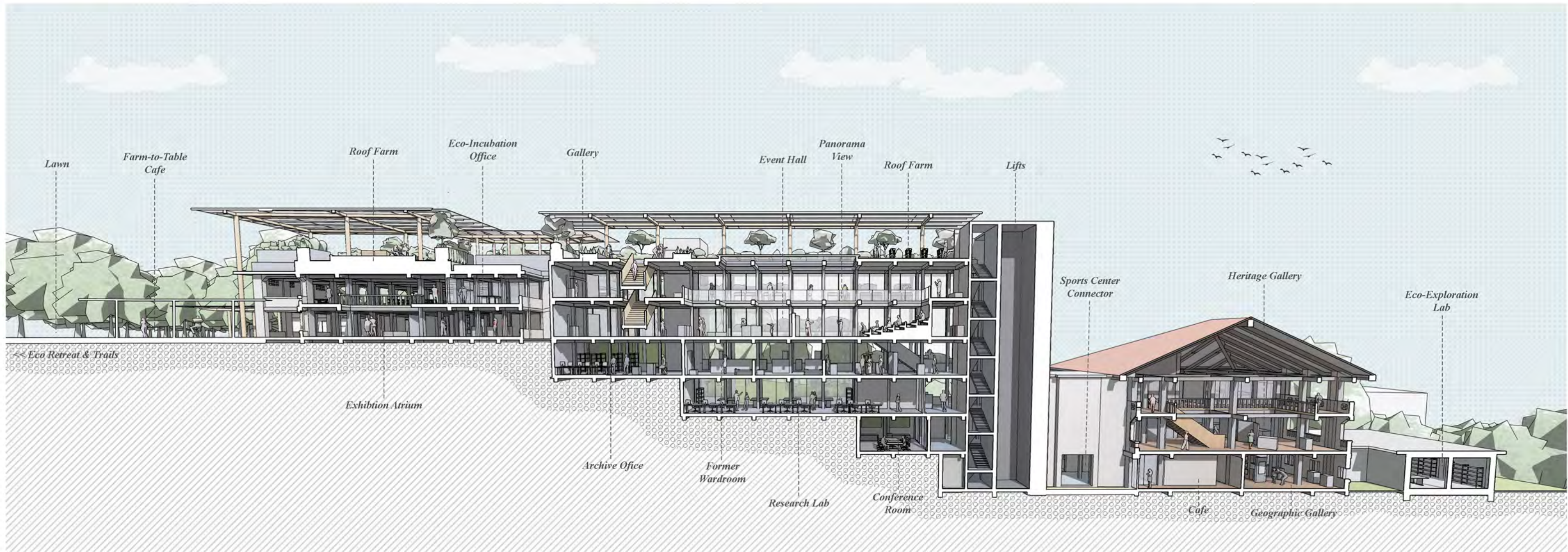
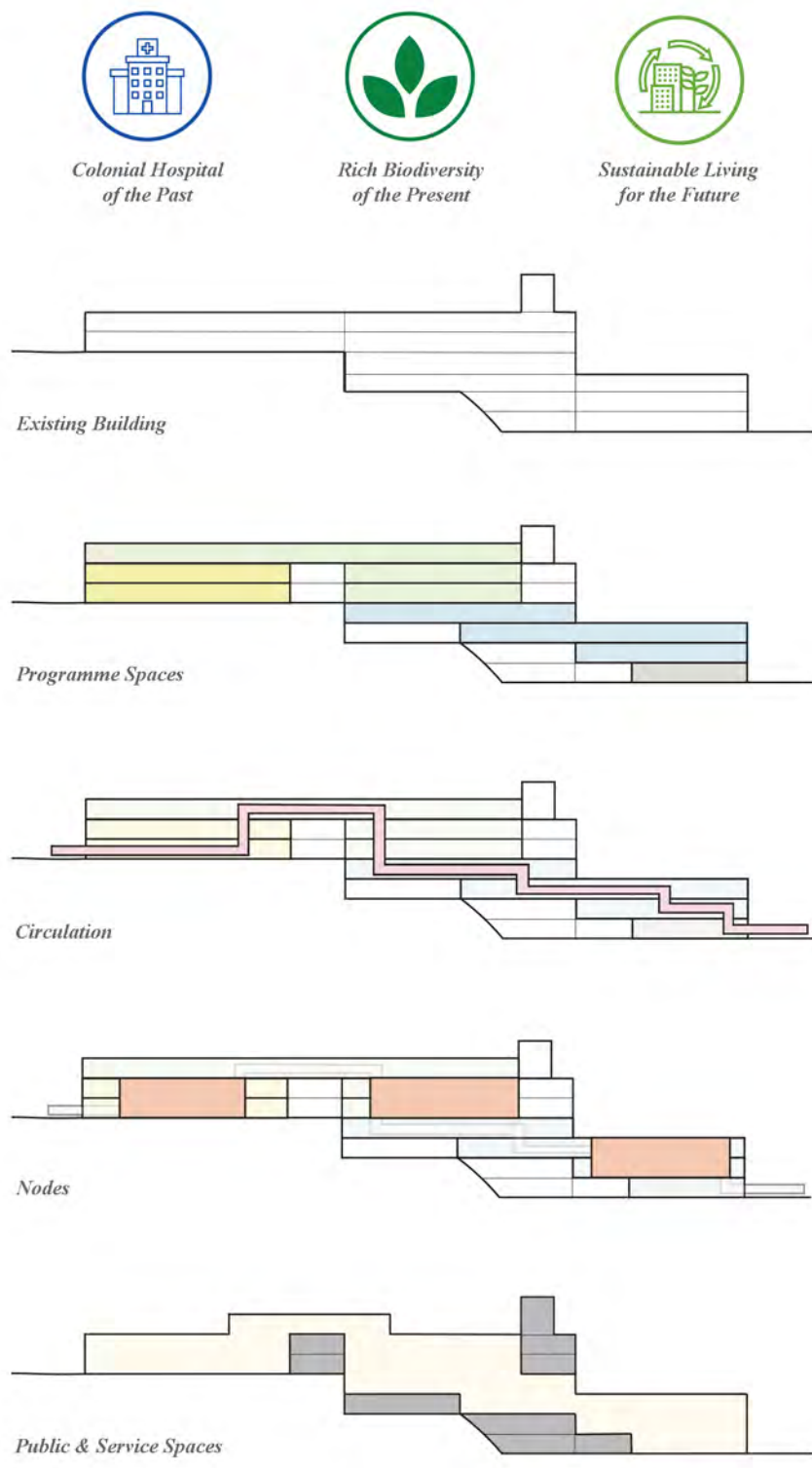
A Learning Center for Heritage and Sustainability

Situated in the middle of Changi Point, the former Changi Hospital is repurposed as the core of the Eco-Village Retreat @ Changi Point, a small satellite town that pilots the development of future towns in Singapore towards self-sustainable urban living within the natural environment. The Changi Ecological Hub serves to connect and support activities in the new eco-lifestyle while functioning as a heritage museum to educate visitors of its colonial past.

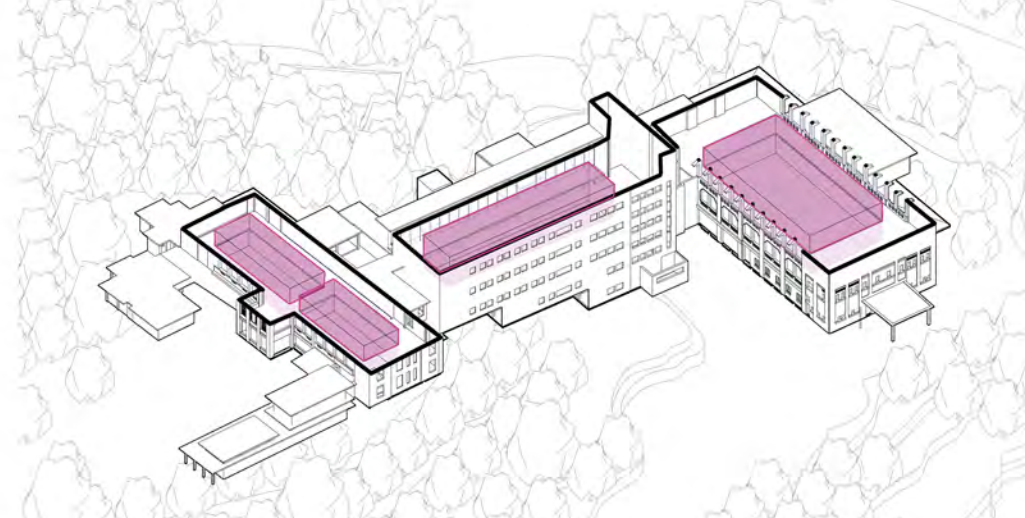
As a landmark of the eco-village with historical importance, its distinctive architectural features are conserved. Underused spaces such as the roof are reintroduced as urban farms with lightweight roof canopies, while existing floor slabs are extended strategically to double as experimental testbeds and eco-classrooms.

To champion the rich history and unique geography, old interiors are redesigned to form gallery spaces that flow across the three blocks. Voids are carved to accentuate the unique roof structure of Block 24, while the atrium of Block 161 draws visitors out to its balcony spaces with a glass facade that frames a sweeping view of the village. The old driveway of Block 37 is revitalised as a courtyard that functions as a pitstop and event space. Beginning with an introduction on its vast biodiversity, visitors are then taken through the building's heyday during the colonial period with preserved hospital wards, before winding up at research classroom labs exploring the potentials of urban farming and an eco-centric lifestyle.

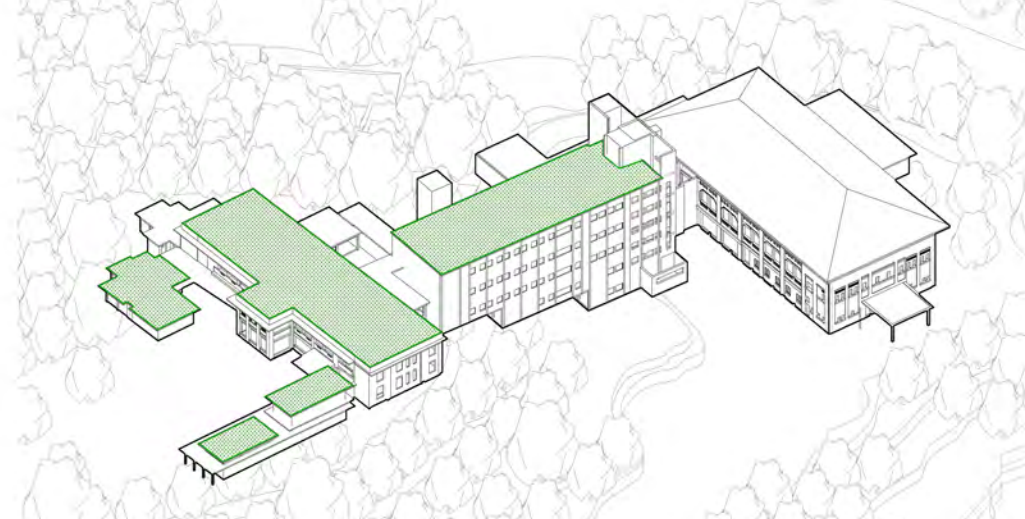
As visitors travel through different blocks of the ecological hub, they learn about its past as a colonial hospital and wartime prison, experience its present as a lush forest rich in flora and fauna, and anticipate its future of sustainable living with nature.



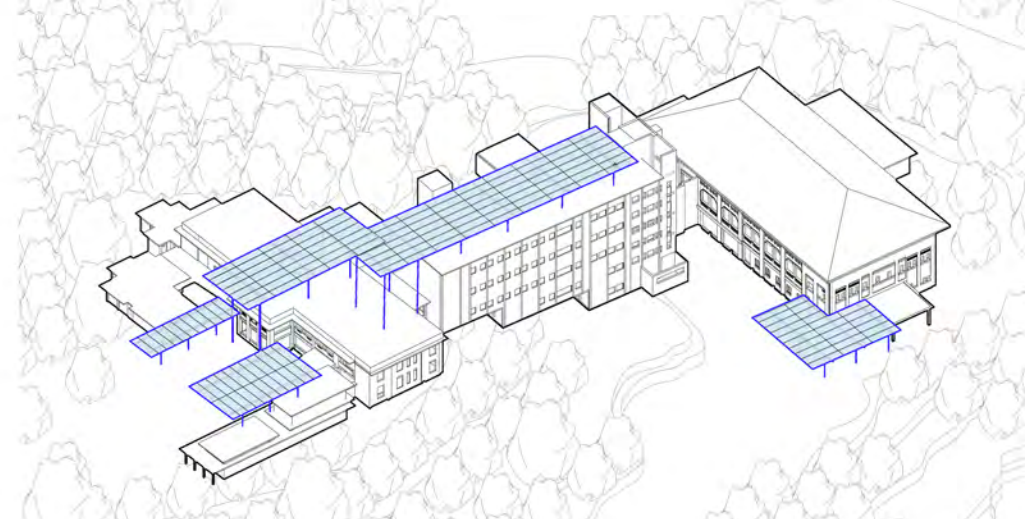
Conservation and Intervention



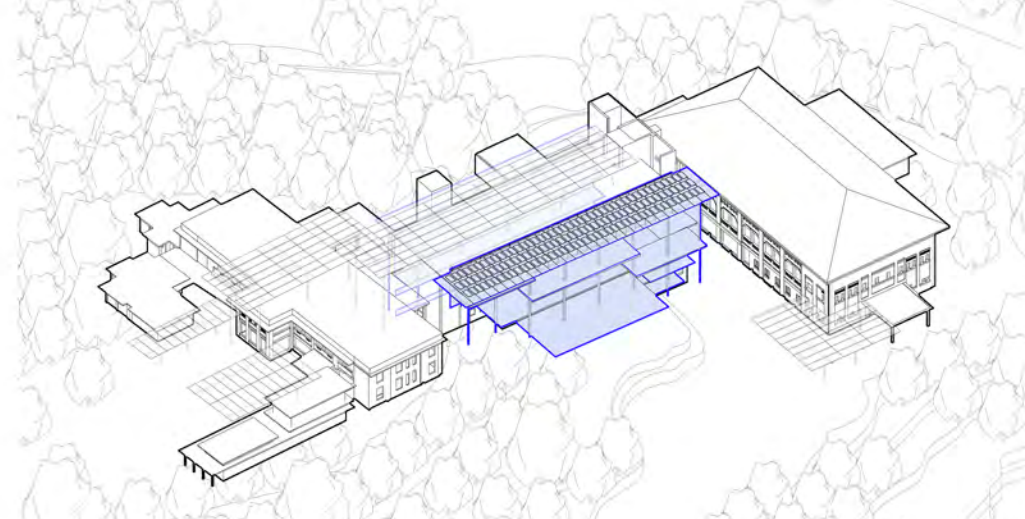
Re-adapting Interior Spaces (Voids Creation)



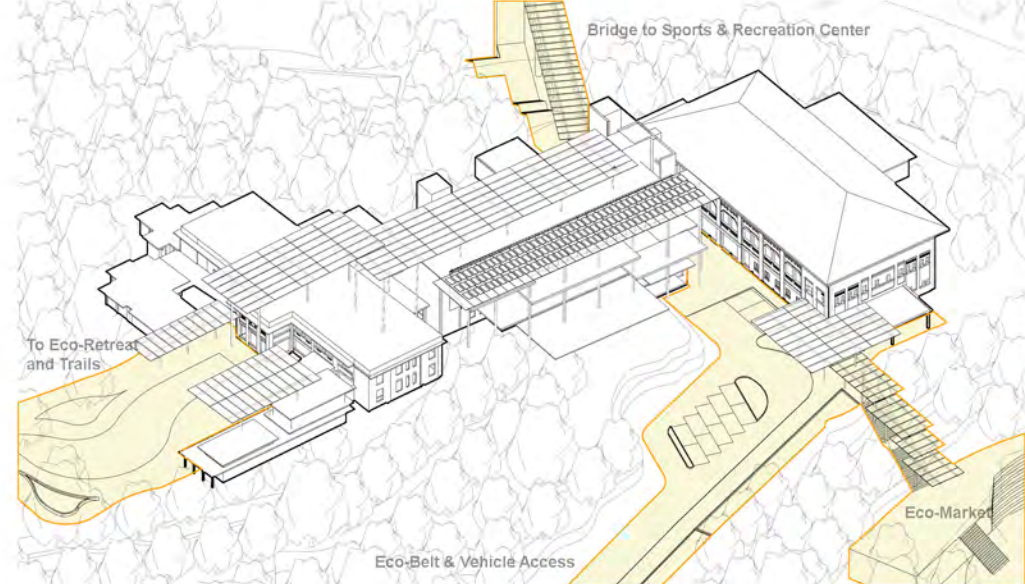
Re-purposing Roof (Roof Farms)



Vitalising Roof Spaces (Roof Canopies)



Vitalising Facade (Green Terraces & Balconies)



Circulation (Access and Exit)

