

2<sup>nd</sup> prize, Topic 2 Open Category

## The Terracademy

### **Liquid Earth Pte. Ltd.:**

William Kwan-Terry

Jason Yeang

### **Participants' Write Up:**

Inspired by the site's history of healing and protection, the proposal re-imagines the Old Changi Hospital as a crucible of life with an aviary, terrarium and lepidopterarium where the public can immerse in lush flora and fauna, and engage in urban farming and activities that preserve the natural heritage. Block 24, being the visitor centre, is envisaged to be a glass terrarium encased by the existing façade and veranda walkways. The proposal also explores the use of sustainable building solutions.

### **Jury Citation:**

The jury recognised that the extent of architectural interventions to support the unique programme of a Terra-Academy was controversial, but noted that it created a highly differentiated spatial experience while balancing the character of the building. This proposal provided a bold take on injecting vibrancy and a unique mix of uses to Old Changi Hospital, which would appeal to diverse user groups.



# THE TERRACADEMY

RE - ENVISIONING  
OLD CHANGI HOSPITAL

628b99

OUR PROPOSAL PAYS TRIBUTE TO THE SITE'S STORIED PAST OF WHAT WAS ONCE THE OLD CHANGI HOSPITAL, AN INSTITUTION DEDICATED TO THE TREATING AND THE HEALING OF THE HUMAN BODY & SOUL.

WE ENVISION A UNIQUE EQUATORIAL EXPERIENCE THAT BUILDS ON THIS LEGACY OF HEALING-- A FUN AND MEANINGFUL DESTINATION THAT EXPLORES THE DEEP HEALING OF OUR PLANET AND HUMAN SPIRIT IN THIS ERA OF ENVIRONMENTAL AND SOCIAL CHANGE WHICH THE WORLD IS CURRENTLY UNDERGOING. IN THIS NEW COMPLEX, EXPERIMENTAL CLEAN POWER GIVES LIFE AND PURPOSE TO THE MAIN TERRARIUM AND ANCILLARY SPACES, WHICH TOGETHER FORM AN ACADEMY FOR SUSTAINABILITY OF OUR PLANET AND PEOPLE.

## CROSS-GENERATIONAL FUN & LEARNING

THE *TERRACADEMY* IS A WONDEROUS TERRARIUM FLOURISHING WITH LIFE WITHIN THE HEART OF THE RESTORED CHANGI HOSPITAL MAIN BUILDING. VISITORS ARE DEEPLY IMMERSSED IN A HEALING, LUSH, LUXURIANT FOREST-SCAPE. THIS 'FOREST-BATHING' KEY SPACE ALSO HOUSES TREE-TOP CLASSROOMS AND SEMINAR ROOMS WHICH BRANCH OUT FROM LIVING LABS IN ADJACENT BUILDINGS. NEXT TO THIS MAIN BUILDING LIES A SHADED COMMUNITY PLAZA AND WATERPARK FOR CROSS-GENERATIONAL ACTIVITIES SET WITHIN NATURE WHERE FUN, THERAPEUTIC, CREATIVE AND EDUCATIONAL OUTDOOR LEARNING PROGRAMMES ARE ORGANISED IN A RESILIENT AND PANDEMIC-FRIENDLY SETTING.

## SUSTAINABILITY THROUGH INNOVATION

THE EXISTING CONSERVED FAÇADE AND INTERNAL 5-FOOT VERANDA WALKWAYS ENCASE & PROTECT THE GLASS TERRARIUM VIA PASSIVE AND ACTIVE DESIGN STRATEGIES. PUBLIC BREAKOUT MEETING SPACES, LIVING CLASSROOMS AND EXHIBITION AREAS ARE ACCESED FROM THESE CORRIDORS.

RAINWATER IS HARVESTED FOR LANDSCAPE IRRIGATION AND WATER FEATURES IN THE WATERPARK. CLEAR PHOTOVOLTAIC GLASS POWERS UP THE LANDSCAPE LIGHTING AND HYBRID-VENTILATION SYSTEMS IN THIS LOW CARBON FOOTPRINT DEVELOPMENT.

## SUSTAINABILITY THROUGH SOCIO-ECONOMIC SYMBIOSIS

A SENSE OF PUBLIC OWNERSHIP IS FORGED IN THIS DEVELOPMENT. WHILST PRIVATE ENTERPRISES OCCUPY AND HELP TO MAINTAIN THE PREMISES, THE PUBLIC IS INVITED TO TAKE UP URBAN FARMING PLOTS AND THUS LEND A HAND IN MAINTAINING THE LANDSCAPE. ESG, CSR AND N.G.OS COULD PROVIDE ON-SITE SUPPORT FOR START-UP SCHEMES RELATED TO SUSTAINABILITY AND INNOVATION.

## PROJECT INFORMATION

ADDRESS: 24, 37, 161 HALTON ROAD  
SITE AREA : ~8,220 SQM  
PROPOSED AREA (GFA) : ~6,000 SQM  
PLOT RATIO: 1.4  
SURFACE CARPARK LOTS: ~108 LOTS

## DESIGN DEVELOPMENT

### ARCHITECTURAL IDENTITY & PLACE-MAKING

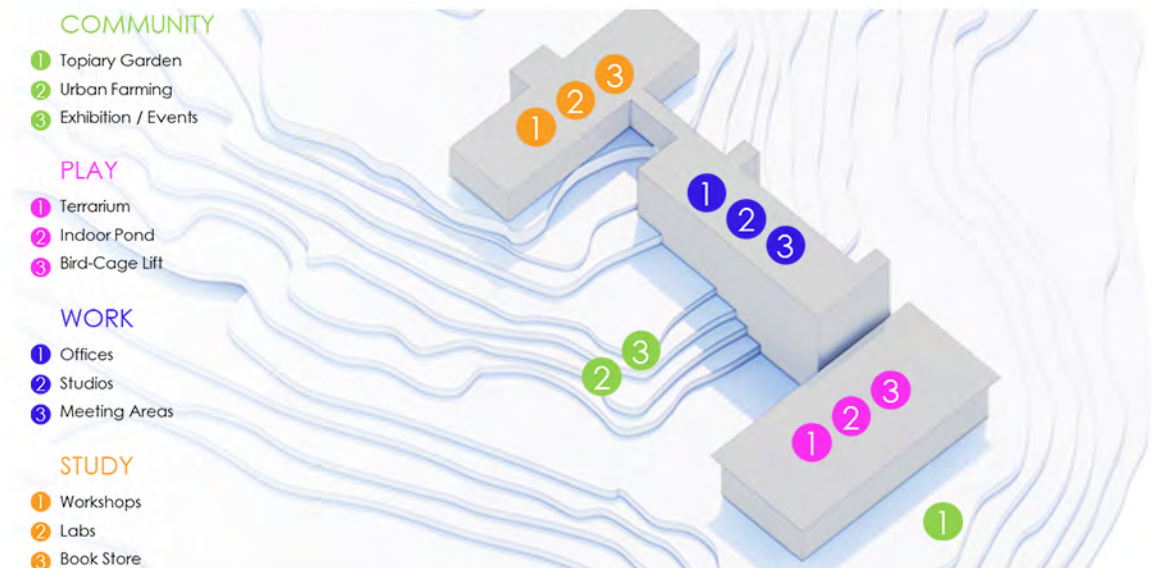
THE *GENIUS LOCI* IS INSPIRED BY THE SITE'S HISTORY OF HEALING AND PROTECTION. ARCHITECTURAL HERITAGE IS CELEBRATED BY RESTORING THE FAÇADE AND THIS PLACE OF HEALING IS TRANSFORMED INTO A CRUCIBLE OF LIFE. AN AVIARY, TERRARIUM, LEPIDOPTERARIUM ALL-IN-ONE, IT IS BRIMMING WITH LIFE IN BOTH FLORA AND FAUNA. NATURE-LOVERS, ENVIRONMENTALISTS, SCIENTISTS, YOUNG EXPLORERS, CURIOUS LOCALS - THIS CRUCIBLE OF LIFE ALLOWS PEOPLE WITH DIVERSE INTERESTS TO VISIT AND ENGAGE IN ACTIVITIES THAT PRESERVE OUR NATURAL HERITAGE AND EQUATORIAL BIODIVERSITY.

THE OLD STRUCTURES ARE GIVEN NEW LIFE AND MEANING, REVITALISED TO INJECT NEW EXPERIENCES FOR THE LOCAL COMMUNITY. AS A SANDBOX FOR GREEN INNOVATION THIS COMPLEX BLENDS IN PERFECTLY WITH THE SITE'S GREENERY AND NATURALISTIC CONTEXT.

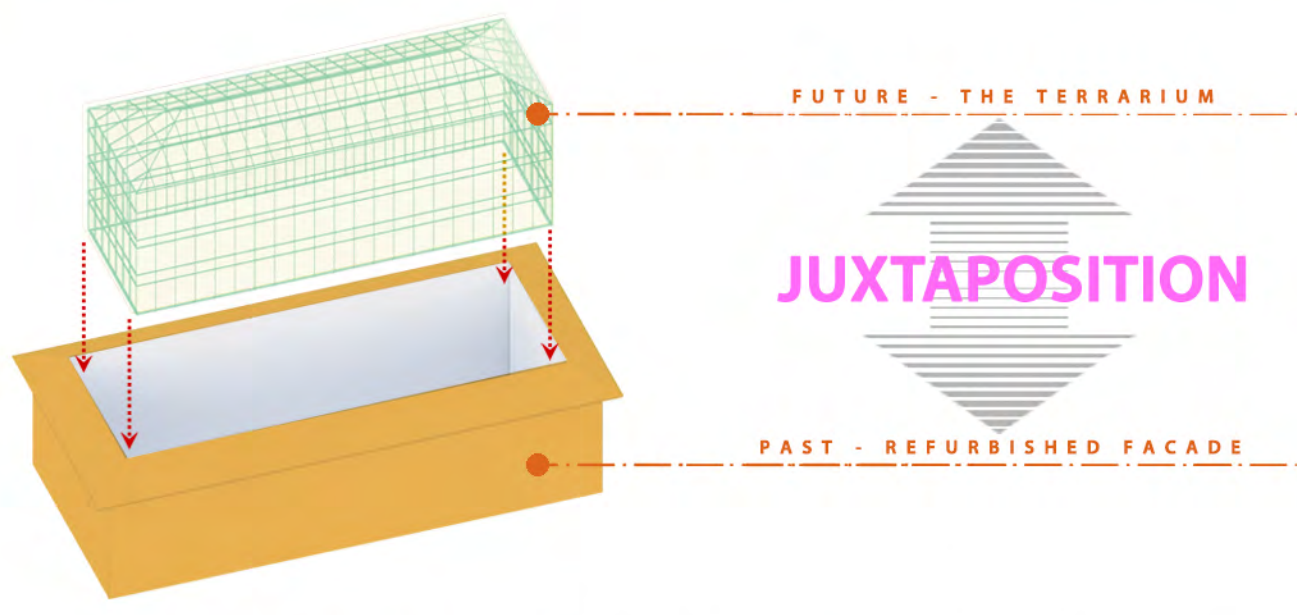
A 'TOPIARY CALDERA' FORMS AN INTERESTING PLACE-MAKING FEATURE THAT OFFERS A FUN EXPERIENCE OF WANDERING GARDENS AND CAPITALISES ON THE SITE'S SLOPING TOPOGRAPHY. IT IS AN IMAGEABLE FOREGROUND THAT QUIETLY COMPLEMENTS THE MAIN ARCHITECTURE TAKING PRIDE OF PLACE ATOP THE HILL, CENTERED ABOVE IT.



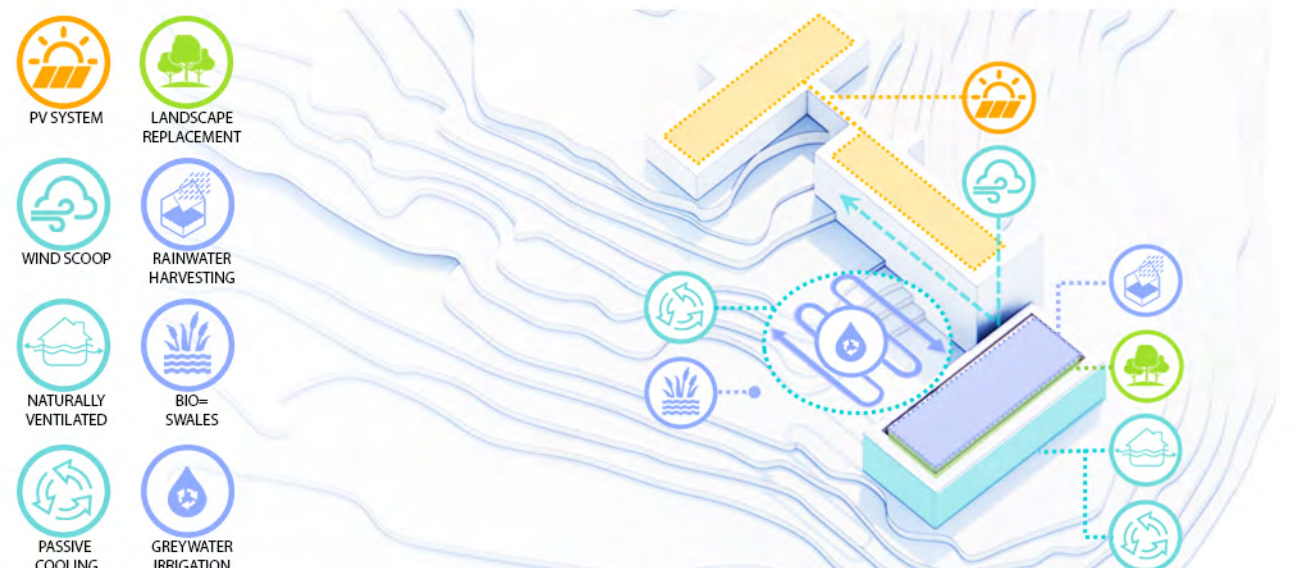
INSPIRATION - TERRARIUMS, ECOSYSTEMS, SENSE OF DISCOVERY & WONDER



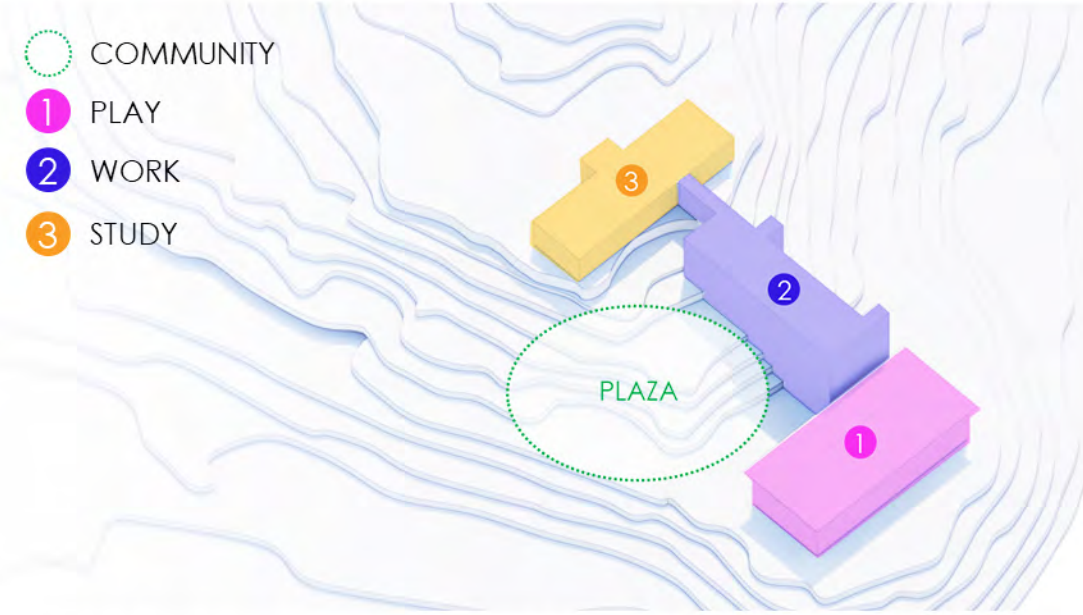
CROSS-GENERATIONAL  
FUN & LEARNING



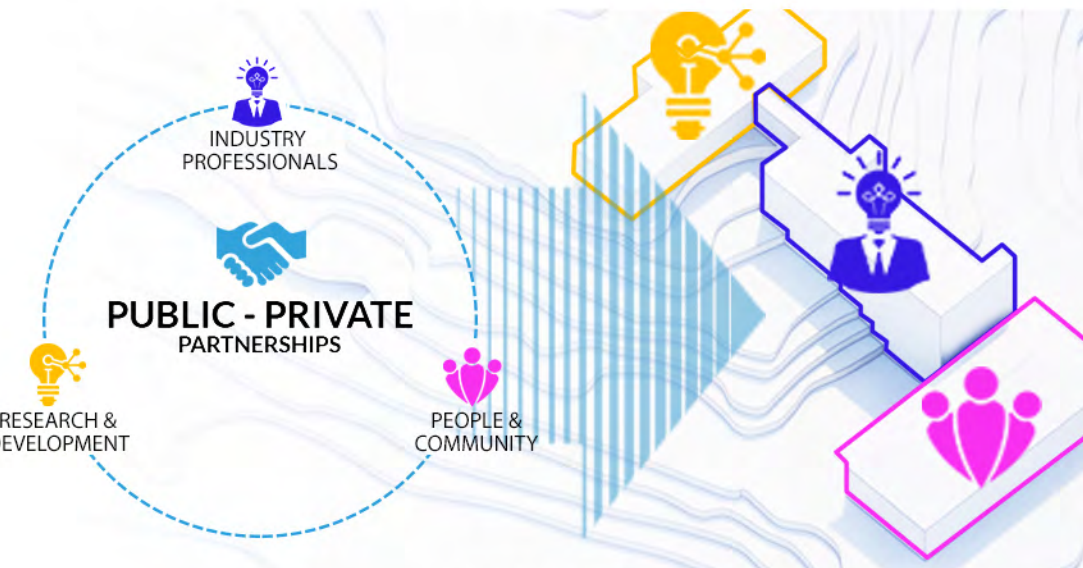
IDENTITY - ARCHITECTURAL JUXTAPOSITION OF PAST & FUTURE



INNOVATION  
THROUGH SUSTAINABLE SOLUTIONS



PLACE-MAKING - A SUSTAINABLE HUB AT THE HEART OF CHANGI

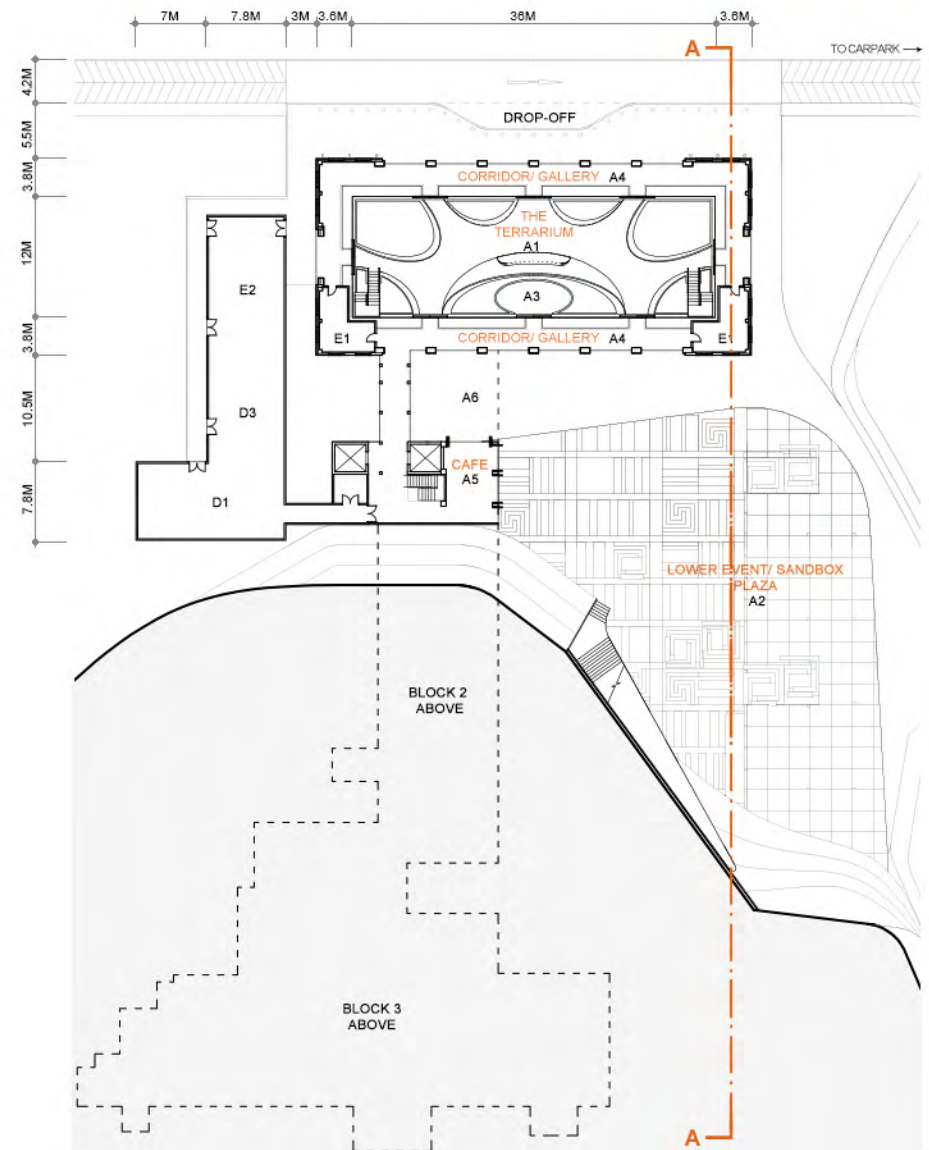
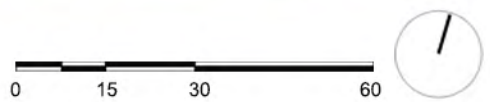


SYMBIOSIS  
SOCIAL & ECONOMIC HARMONY



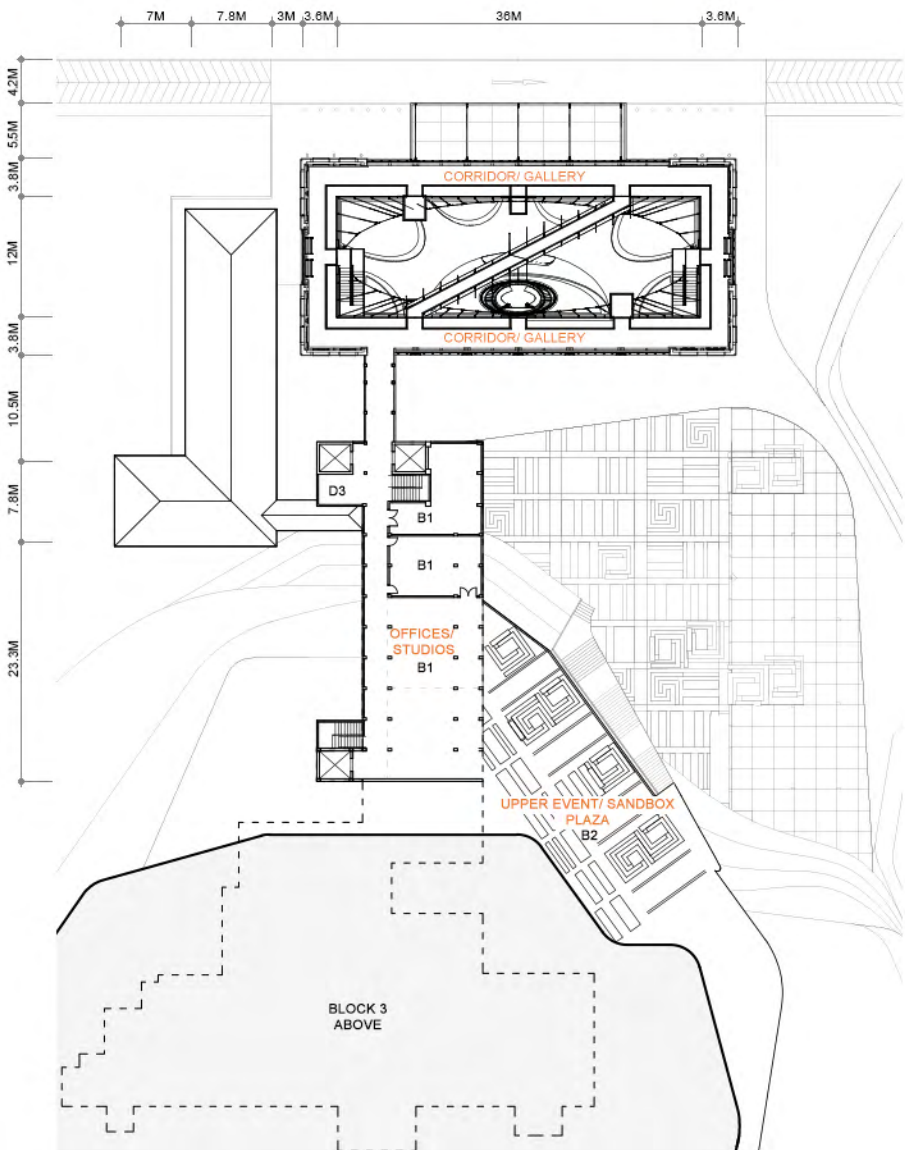


SITE PLAN

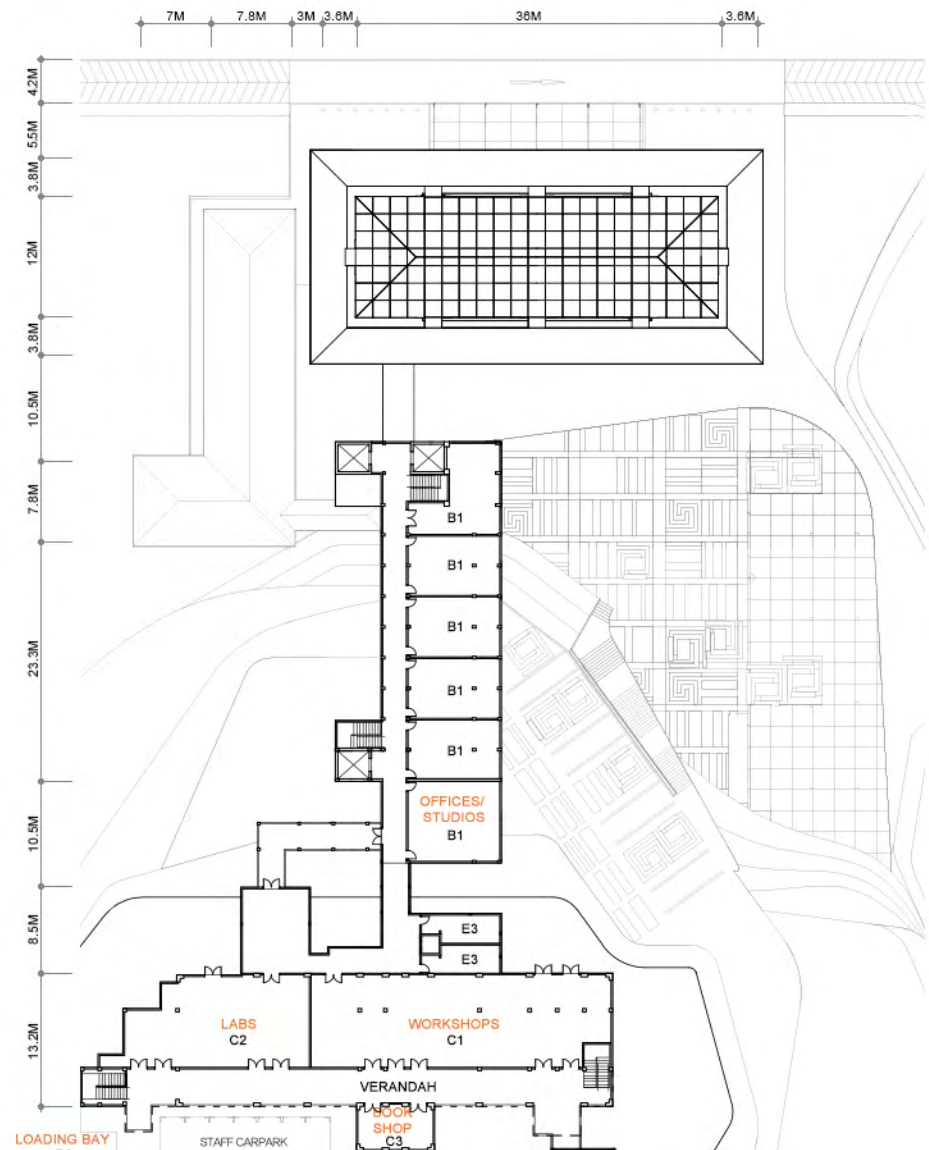


1ST STOREY FFL± +0.0m

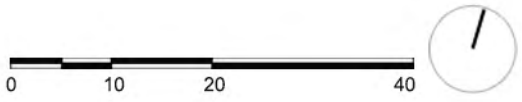
LAYOUT PLANS SCALE 1: 750



3RD STOREY FFL± +0.8m



5TH STOREY FFL± +1.6m



ROOM SCHEDULE

A Block 1 - Visitor Centre		Area (sqm)
1	The Terrarium / Reception Area	520
2	Lower Event / Sandbox Plaza	1295*
3	Birdcage Lift	20
4	Corridor / Gallery	482
5	Café	40
6	Alfresco	75*
Subtotal		1062

B Block 2 - Offices		Area (sqm)
1	Offices / Studios	2300
2	Upper Event / Sandbox Plaza	377*
Subtotal		2300

C Block 3 - Workshops		Area (sqm)
1	Workshops	960
2	Labs	500
3	Book Shop	35
Subtotal		1495

D Storage / Support Areas		Area (sqm)
1	Kitchen	112
2	Loading Bay	78*
3	All other support and storage facilities	164
Subtotal		276

E Areas with Visitor / Staff Amenities		Area (sqm)
Visitor-Amenities including:		
1	Public Toilets	62
2	Staff Office	95
3	Staff Toilets	48
Subtotal		205

F Neutral Areas		Area (sqm)
1	Circulation Spaces	362
2	Other M&E- related spaces	300
Subtotal		662

Total		6000
-------	--	------

\*Non-GFA



SECTION A-A

