

3rd prize, Topic 1 Open Category

Climate Ready Changi

Siura Studio:

Anton Siura

Carissa Chin

Natania Priska

Participants' Write Up:

"Climate Ready Changi" proposes for Changi Point to be a pilot climate ready district aimed at promoting Singapore's climate resilience agenda through an integrated development for science, education, business and recreation. Through its five village experiences for Learning, Innovation, Sports, Recreation and Retirement, as well as programming efforts, the proposal envisages visitors from all walks of life appreciating the threat of climate change and provides multiple pathways for civic engagement on climate crisis.

Jury Citation:

The focus on addressing climate change in this submission was a unique but highly relevant point of view that resonated with the jury. The proposals were ecologically sensitive and imaginative, such as ideas on shaping the coast for resilience against rising sea levels. The jury felt that these proposals had a universal quality that could be easily expanded beyond Changi Point to other parts of Singapore.

CLIMATE READY CHANGI

Climate change is the defining crisis of our time. In a city-state like Singapore, the climate crisis have also become the nation's top priority agenda. We must rise to face it together though means of a pilot integrated development that raises awareness while providing recreational space that fits the local cultural context. It is projected that Singapore could experience an increase in sea level of 1m by 2100; the current rustic-charm environment and heritage buildings at Changi Point is vulnerable to rising sea level. Hence it makes sense that the master plan can potentially serves as a pilot integrated development that responds to the climate crisis. This concept master plan expands the vision of Changi Point's future as a community place that inspires climate action with programming across arts, sciences and recreation that builds connections within communities and deepens the understanding of climate resiliency, thus emerge as a climate-ready nation. Building on the popularity and trust held by the museum and science-based research institutions combined with leisure activities, Climate Ready Changi brings people together to learn about climate adaptive solutions and join the fight for a brighter future, providing multiple pathways for civic engagement.

THE SPATIAL RESILIENCY

The spatial planning presents a lush blue-green oasis that provides a much-needed refuge from the city, creates opportunities for local community and visitors to interact in a setting that incorporates elements of heritage and nature. The five villages zone corresponds to the existing heritage building and open spaces, make each place connected with diverse users and programs within a car-lite environment. The site's ecology is enhanced by improving the ecosystem connectivity, protection of the existing woodlands patches and revitalizing shorelines and wildlife habitat. The existing building is also repurposed according to its building space and environment character that cater activities to promotes climate awareness for different age group and background.

ACTIVITY ZONING



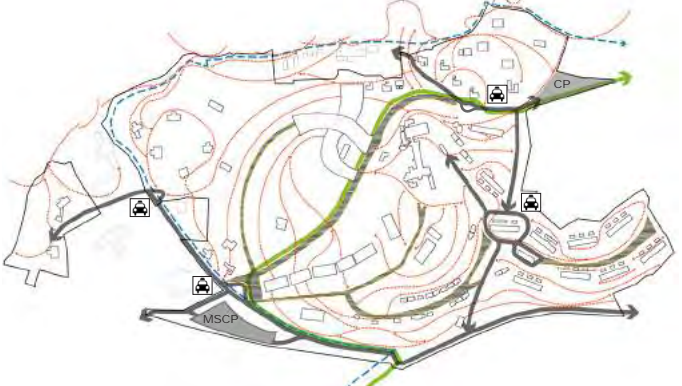
- Recreation
- Sports Village
- Innovation Village
- Changi Memorial Museum
- Resiliency Campus
- Retirement Village

BUILDING TYPOLOGY



- Sports and Recreation
- Museum/Gallery
- Educational/Institute
- Shop/Office
- Commercial
- Visitor Centre
- Residential
- Open Space

CIRCULATION



- Vehicle Road Access
- Main Pedestrian Spine
- Secondary Pathway
- Drop-off point
- Round Island Route
- Park Connector
- Carpark

ECOLOGICAL CONNECTIVITY

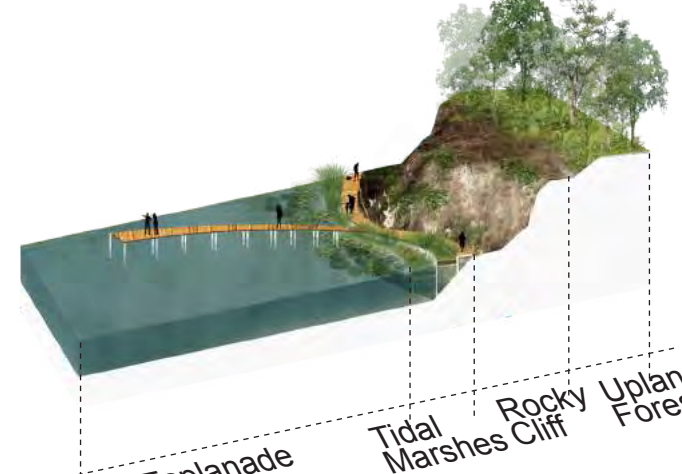


- Woodlands Core
- Transition Zone
- Dunes Grassland
- Tidal Marshes

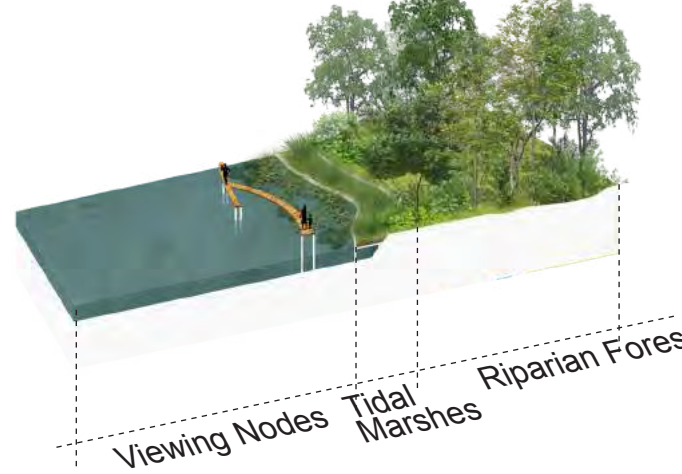
THE COASTAL RESILIENCY

Climate Ready Changi expands the vision for the future of the Singapore shorelines, it becomes a pilot project offering strategies to adapt to sea-level rise flood risk while also establishing a framework to connect the cliff, waterfront parks, marshes and beaches in Changi, transforming them into accessible, continuous waterfront esplanade boardwalk. The coastal resiliency approach consists of strategic flood protection with nature-based solution to reduce wave action and erosion while preserving or enhancing valuable ecosystems. Marshes and riparian forest are introduced as a coastal protection approach that serves as an essential function for its resiliency to sea-level rise, reduces shoreline erosion, and offers refuge areas and nesting sites for migratory avifauna.

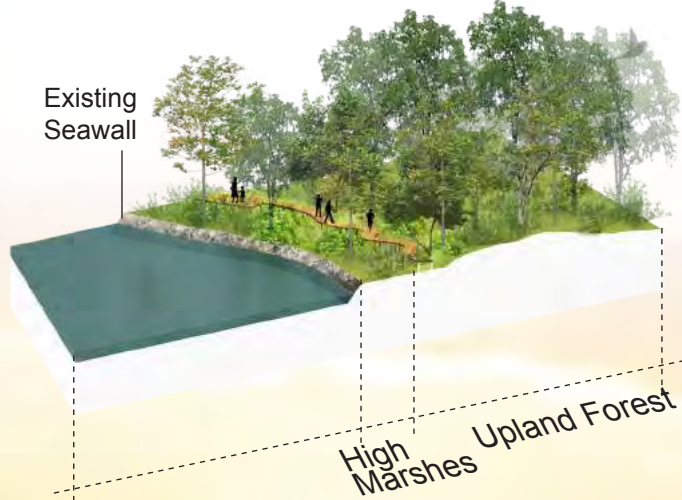
A. INTERTIDAL MARSHES



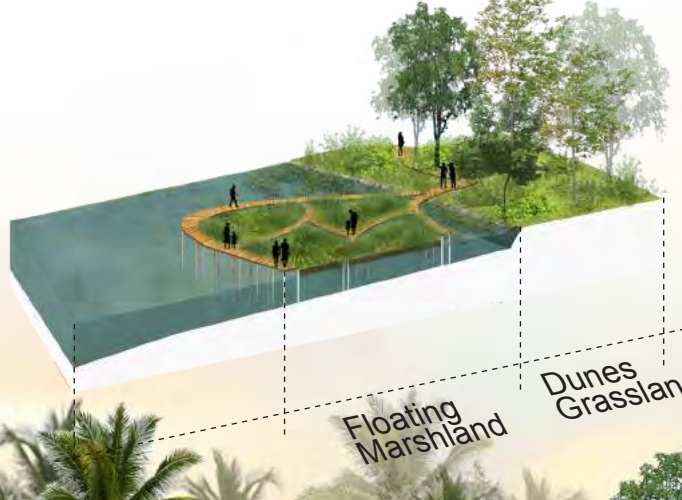
B. RIPARIAN FOREST



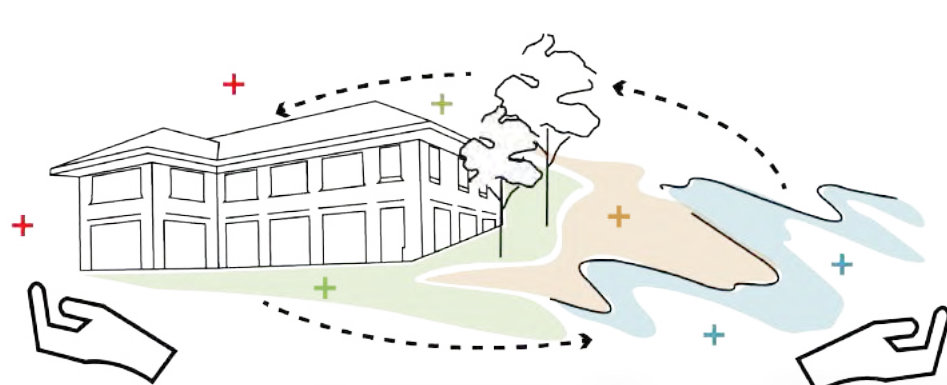
C. HIGH MARSHES



D. FLOATING MARSHLAND

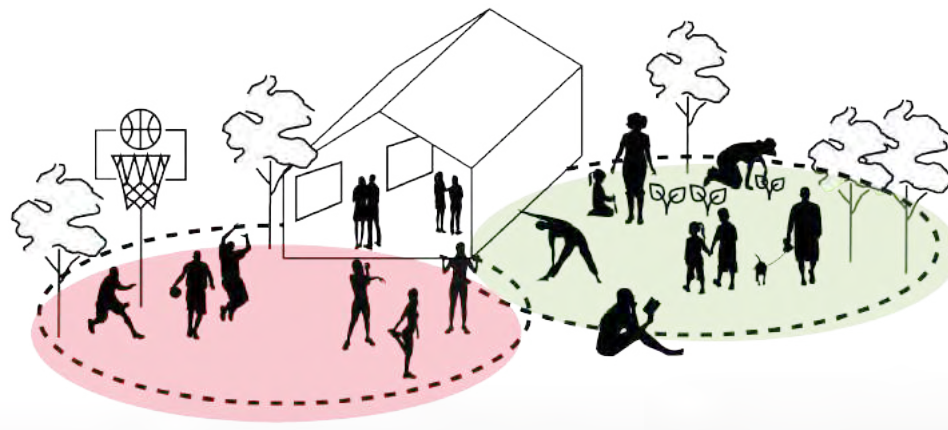


THE CONCEPT:



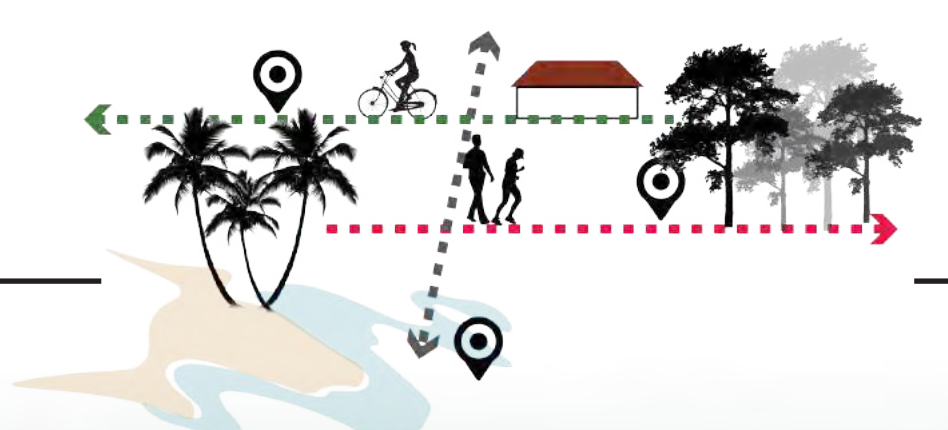
CARE

Existing buildings are cared, conserved and repurposed according to the building space and environment quality. The shoreline and landscape is revitalized with nature-based ecology solution that responds to the climate crisis.



CREATE

Indoor and outdoor space are created for diverse activity programs that cater for people of all walks of life. The main program focus on social, education, business and recreational activities that promotes climate action.



CONNECT

The masterplan framework enhances connectivity, access and car-lite mobility, promote the health of natural ecosystem, and reinforce connected, cohesive sense of place with rustic charm heritage building and nature.



CELEBRATE

Climate Ready Changi celebrates a culture for action on climate, inviting people from all walks of life into the conversation, climate crisis awareness and building community around just solutions.

LEGEND

- 1 Road Infrastructure
- 2 Main Pedestrian Spine
- 3 Secondary Pedestrian Path
- 4 Informal Trail
- 5 The Esplanade
- 6 Changi Memorial Museum
- 7 Changi Hill
- 8 Sports Hall
- 9 Climate Museum
- 10 Resiliency Campus
- 11 Innovation Village
- 12 Retirement Village
- 13 Lepak Beachfront
- 14 Coastal Sand Beach
- 15 The Great Lawn
- 16 Dunes Grassland
- 17 Woodland Forest
- 18 Upland Forest
- 19 Tidal Marshland
- 20 Research Centre
- 21 Climate Farming
- 22 Swimming Pool
- 23 Basketball Court
- 24 Tennis Arena
- 25 Inflatable Play
- 26 Children Playground
- 27 Sea Bath
- 28 Bioretention Pond
- 29 Vegetative Swale
- 30 Detention Pond
- 31 Multi Storey Carpark
- 32 Open Carpark
- 33 Cloud Pavilion
- 34 Annex Building Arrival Hall



100m



LONGITUDINAL SECTION EE'

FRONTLINES OF CLIMATE ACTION

Climate Ready Changi reinforces and expands the rustic charm character of Changi Point, connects the surrounding infrastructures and welcoming people of all walks of life. This masterplan aims to be the frontlines of climate action, piloted as the first integrated development for science, education, business and recreational that promoting Singapore's climate resiliency agenda. Climate Ready Changi proposes a suite of strategies for adaptive interventions with nature-based solution, heritage conservation while enhance public access, recreational areas, and educational programming for adjacent communities. Through interweaving history, culture and nature of Singapore contexts, the existing buildings and open spaces are repurposed into a mixed array of social, educational, communal and recreational facilities with dynamic programs designed for people across generations.

This masterplan proposes five village experiences (Learning, Innovation, Sports, Recreational, Retirement) that conform to the site's tranquil character while repurposing the buildings with respect to the scale and locations. The masterplan weave the nature and buildings seamlessly through sensitive new building extensions that enhance the site connectivity. The Old Changi Hospital is repurposed as a Climate Museum with an annex building inserted through the slope functioned as arrival hall so people can access conveniently from the Park Connector (formerly Netheravon Road). The new sports hall roof designed as platform that connects the Climate Museum to the coastline, bridging the level differences sensitively. The existing nursing homes are retained and some building blocks are converted into studio apartments destined as retirement village with climate conscious programs such as climate farming. The barracks at Hendon Road repurposed as Resiliency Campus, a place for students and climate scientists to work in tranquil settings with direct access for experimental studies of the shoreline ecosystem for mitigating sea-level rise. The CSC Fairy Point and Seafront chalets is repurposed into recreational village with commercial outlets such as F&B, retails, Lepak beachfront and Sea Bath for community enjoyment. Meanwhile, the Fairy Point Chalet 6 & 7 become a Changi Memorial Museum in tranquil setting to reminisce the historical memories of the old site.

Fronting the Recreational Village, the Esplanade connect the east and west development through a continuous boardwalk with a series of constructed tidal marshes that improve the shoreline ecosystem health. Lastly, the former houses at Halton Rod is transformed into an Innovation village with start-up shop-offices that supports Singapore economies by incorporating and nurturing homegrown local businesses start-up to be an ecologically minded and socially conscious living-learning community for the future. With all these diverse places and programs that accommodate people from all walks of life like students, scientist, office workers, retailers, commercial, kids, teens, adults and senior citizen, Climate Ready Changi is envisioned as a new vibrant lifestyle in rustic-tranquil charm environment that welcoming people seven days a week, day or night; promoting the Frontlines of Climate Action.

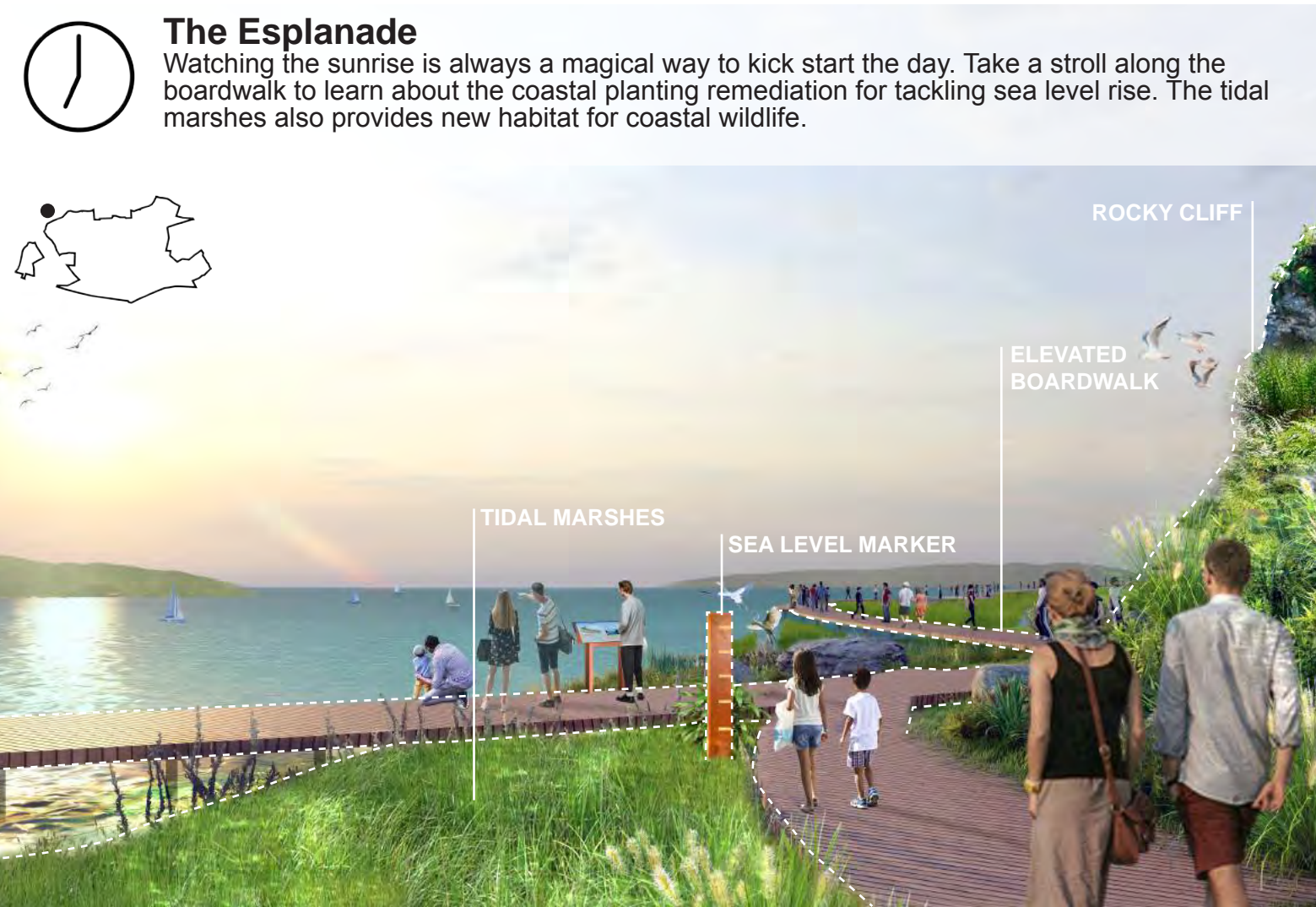
A PLACE FOR PEOPLE FROM ALL WALKS OF LIFE



CONCEPT MASTER PLAN FOR CHANGI POINT
OPEN CATEGORY - 3db43c

A DAY AT CLIMATE READY CHANGI

E
X
P
L
O
R
E



The Esplanade
Watching the sunrise is always a magical way to kick start the day. Take a stroll along the boardwalk to learn about the coastal planting remediation for tackling sea level rise. The tidal marshes also provides new habitat for coastal wildlife.

I
N
N
O
V
A
T
I
O
N



Innovation Village
Morning buzz at the Innovation precinct is filled with office workers, retailers, visitors and residents. This is a place for start-up companies to innovate, showcase and sell their products, art or services as front liner for climate actions. The former houses at the Halton Road now becomes a bustling innovation market and offices for climate heroes.

L
E
A
R
N



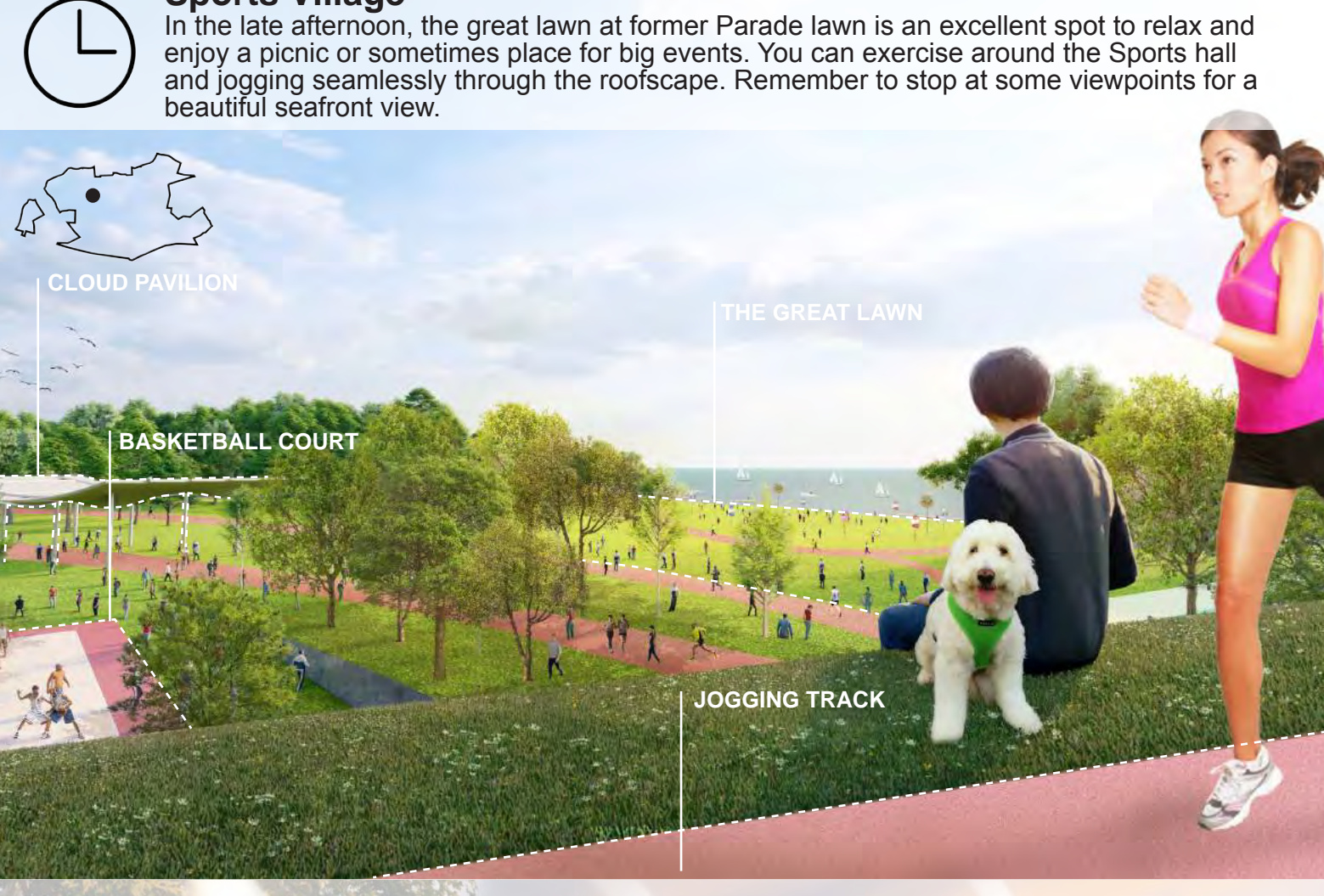
Learning Village
Full of charm and character, the barracks at Hendon Road is adaptively reused as Resiliency Campus to welcome academia, researchers and professionals to study and conduct research that benefits the environmental and provide creative climate solutions in a quiet and rustic ambience. The sloping contours around the building is transformed into an outdoor theatre with shaded tree canopies.

V
I
S
I
T



Climate Museum
A must visit place is the historical Old Changi Hospital which have been adaptively improvised into a Climate Museum. A new proposed annex building serves as the arrival hall, carefully built at the slope topography for a convenient and direct access from the park connector (formerly Netheravon Road). The Climate Museum at Changi point, invites people from all walks of life, instilling a sense of awareness, highlighting the importance of creating a nation for climate resiliency and provide future actions and solutions to tackle climate change.

P
L
A
Y



Sports Village
In the late afternoon, the great lawn at former Parade lawn is an excellent spot to relax and enjoy a picnic or sometimes place for big events. You can exercise around the Sports hall and jogging seamlessly through the roofscape. Remember to stop at some viewpoints for a beautiful seafront view.

C
L
O
U
D



Lepak Beachfront
In the evening, Lepak beachfront would be the best place to hang out. The former CSC Seafront Chalets is re-enhanced as a vibrant leisure destination with F&B, retail and playscape along the beachfront. Let the kids play at the inflatable playground as you sip your coffee from one of the many outdoor patios and take in the buzzing atmosphere.

S
T
A
Y



Changi Hill
To end your day, sit back and relax at the Changi Hill with sunset sky views. The vibrant F&B outlets with patios is re-purposed from the former CSC Fairy Point Chalets. This is the ideal place for a romantic dinner or social gathering spot when the pandemic ends.

24/7



Retirement Village
Perhaps you like Changi Point so much that you'd rather spend your retirement time here. If that's the case, you can purchase or rent the apartment or book a nursing home to stay 24/7. Here you can be part of the climate farming community to grow food and livestock in sustainable way while having social interaction among the seniors and young climate volunteers.