



STAR STORY

SIGHTS AND SOUNDS

HAPPENINGS

COMMUNITY AND US



Launch of OneMap IdeaWorks!

On 20 July 2017, the Singapore Land Authority launched a three-month campaign to foster co-development of geospatial data solutions.

READ MORE



ESRI User Conference 2017, San Diego

An SLA team led by Chief Executive, Mr Tan Boon Kai presented on mapping and geospatial analytics at the ESRI User Conference 2017, in San Diego, United States.

READ MORE



Cambridge Conference 2017

The Cambridge Conference 2017 was held from 2-6 July in Oxford, United Kingdom. Attended by more than 100 global participants, the Conference saw presentations by 35 senior leaders from a diverse mix of backgrounds spanning government land administration, geospatial, geomatics and surveying, technology and statistics.

READ MORE

EDITORIAL TEAM

LAND IS A QUARTERLY ONLINE PUBLICATION BY SINGAPORE LAND AUTHORITY (SLA), 55 NEWTON ROAD #12-01, SINGAPORE 307987.

ADVISORY COMMITTEE CHAIRMAN

SIMON ONG

ADVISORY COMMITTEE

NG SIAU YONG, SOH KHENG PENG & JOHNSON SEAH

CHIEF EDITOR

ADRIAN TAN

CONTRIBUTORS

ADRIAN TAN, ERIC KOH, CHERYL LIM, NG YONG XIANG, RICHARD LOO
TELL US WHAT YOU LIKE TO READ IN LAND
FOR FEEDBACK AND SUGGESTIONS, SUBSCRIPTION AND ADDRESS CHANGES,
WRITE TO ADRIAN TAN AT SLA_LAND_NEWSLETTER@SLA.GOV.SG OR
CALL 1800-3239829

COPYRIGHT © SLA. ALL RIGHTS RESERVED. THE CONTENTS OF LAND MAY BE REPRODUCED SUBJECT TO APPROVAL BY SLA.



STAR STORY

SIGHTS AND SOUNDS

HAPPENINGS

COMMUNITY AND US

"Discovering Singapore's Best Kept Secrets"

by Cheryl Lim

State properties under the custodianship of the Singapore Land Authority (SLA) are rich in history; some played integral roles in our nation building while others invoke a sense of personal nostalgia. It is therefore, understandable that these heritage-rich properties continue to fascinate many, be it the older generation seeking to connect with their younger days or those from the younger generation looking for inspiration from a bygone era.

It is with this in mind that SLA collaborated with heritage blogger Jerome Lim of *The Long and Winding Road* to launch a first-of-its-kind series of guided visits to historic State properties. The series, "Discovering Singapore's Best Kept Secrets" showcased many of these heritage properties which are hidden within plain sight, as they could be easily overlooked amongst swankier modern developments.

The visits are led by Jerome Lim and will cover eight State properties including the Old Kallang Airport, former Central Police Station and the Adam Park Estate.

Participants will be given rare and exclusive access to these sites and an introduction to the State properties by Jerome on their historical and architectural significance.

"Discovering Singapore's Best Kept Secrets" kicked off on Saturday, 29 July 2017 with a visit to Singapore's second power station after St James Power Station - Pasir Panjang Power Station A (PPPS) with more than 30 participants. Follow #SLaSecretSpaces on Facebook and Instagram for more information on the visits.



Pasir Panjang Power Station A - 29 July 2017



Former Kinloss House at 3 Lady Hill Road - 12 August 2017



Old Kallang Airport - 26 August 2017



BACK TO TOP ▲

EDITORIAL TEAM

LAND IS A QUARTERLY ONLINE PUBLICATION BY SINGAPORE LAND AUTHORITY (SLA), 55 NEWTON ROAD #12-01, SINGAPORE 307987.

ADVISORY COMMITTEE CHAIRMAN
SIMON ONG

ADVISORY COMMITTEE
NG SIAU YONG, SOH KHENG PENG & JOHNSON SEAH

CHIEF EDITOR

ADRIAN TAN

CONTRIBUTORS

ADRIAN TAN, ERIC KOH, CHERYL LIM, NG YONG XIANG, RICHARD LOO
TELL US WHAT YOU LIKE TO READ IN LAND
FOR FEEDBACK AND SUGGESTIONS, SUBSCRIPTION AND ADDRESS CHANGES,
WRITE TO ADRIAN TAN AT SLA_LAND_NEWSLETTER@SLA.GOV.SG OR
CALL 1800-3239829

COPYRIGHT © SLA. ALL RIGHTS RESERVED. THE CONTENTS OF LAND MAY BE
REPRODUCED SUBJECT TO APPROVAL BY SLA.



STAR STORY

SIGHTS AND SOUNDS

HAPPENINGS

COMMUNITY AND US

Launch of OneMap IdeaWorks!

by Adrian Tan

On 20 July 2017, the Singapore Land Authority (SLA) launched a three-month campaign to foster co-development of geospatial data solutions and analytics through the use of the new OneMap and open geospatial data.

Known as OneMap IdeaWorks!, the campaign encouraged community organisations to submit challenge statements and invited the technology community to come up with a corresponding innovative solutions using geospatial technology.

"OneMap IdeaWorks! will build and strengthen the collaboration among different communities through the use of geospatial information science and technology" said Mr Ng Siau Yong, Director of Geospatial and Data Division, SLA.



Participating teams at the OneMap IdeaWorks! workshops

The campaign consists of a series of events, including a meet-up session to pair the participating teams with a challenge statement and workshops/training on OneMap Application Programming Interface (API). The campaign will culminate to a show-and-tell in front of a judging panel and a prize presentation ceremony on 12 October 2017. Visit <http://ideaworks.onemap.sg> to find out more.

Launch of New OneMap

Concurrently SLA announced the launch of the new OneMap which was developed in-house by SLA using Open Source Technologies. The new OneMap incorporates additional features such as Map Styles, Driving and Journey planner and BusRoute Explorer among others. Available as a mobile application, the new OneMap is now available for download on both Apple App Store and Google Play Store.

Available on Google <https://goo.gl/aMNGqg> and Apple app store <https://goo.gl/FnyT6S>

BACK TO TOP ▲

EDITORIAL TEAM

LAND IS A QUARTERLY ONLINE PUBLICATION BY SINGAPORE LAND AUTHORITY (SLA), 55 NEWTON ROAD #12-01, SINGAPORE 307987.

ADVISORY COMMITTEE CHAIRMAN
SIMON ONG

ADVISORY COMMITTEE
NG SIAU YONG, SOH KHENG PENG & JOHNSON SEAH

CHIEF EDITOR

ADRIAN TAN

CONTRIBUTORS

ADRIAN TAN, ERIC KOH, CHERYL LIM, NG YONG XIANG, RICHARD LOO
TELL US WHAT YOU LIKE TO READ IN LAND
FOR FEEDBACK AND SUGGESTIONS, SUBSCRIPTION AND ADDRESS CHANGES,
WRITE TO ADRIAN TAN AT SLA_LAND_NEWSLETTER@SLA.GOV.SG OR
CALL 1800-3239829

COPYRIGHT © SLA. ALL RIGHTS RESERVED. THE CONTENTS OF LAND MAY BE REPRODUCED SUBJECT TO APPROVAL BY SLA.



ESRI User Conference 2017, San Diego

by Ng Yong Xiang and Richard Lo

An SLA team led by Chief Executive (CE), Mr Tan Boon Kai presented on mapping and geospatial analytics at the ESRI User Conference 2017, held in San Diego, United States.

The ESRI User Conference (UC) is the world's largest Geographic Information System (GIS) themed conference. This year's conference attracted over 17,000 ESRI users. The week-long event showcased the latest innovations and solutions in ESRI technology, through a series of discussion forums and technical workshops.

Senior Executive Summit and National Geospatial Executive Forum



During the week-long conference, CE together with Director Geospatial and Data Division (GSDD), Mr Ng Siau Yong and Senior Deputy Director, Land Survey, Dr Victor Khoo attended two key events, the Senior Executive Summit, and the National Geospatial Executive Forum (NGEF). The events provided invaluable interaction opportunities for the invited geospatial leaders from around the world.



At NGEF, CE was invited to participate in a plenary discussion titled, "Building the Modern Geospatial Authority". The discussion covered a range of topics, including: challenges faced by geospatial authorities in today's context; private sector and public participation in geospatial endeavours; importance of data accessibility and availability; as well as the path ahead.

Imaging and Mapping Forum



At the Imaging and Mapping Forum, Dr Victor Khoo shared SLA's development of the Singapore Advanced Map (SAM), a 2D-3D hybrid map system which allows for the combination of 2D and 3D geospatial data in an integrated environment for data visualisation and analysis to support internal processes.

Asia-Pacific Regional User Group Meeting



At the Asia-Pacific Regional User Group Meeting, D/GSDD, Mr Ng Siau Yong presented on the GeoSpace Analytic Suite, an ongoing effort by SLA through the SG-SPACE programme. The suite would enable geospatial analytics and data exploration capabilities for agencies, generating new insights for planning and operations.

Map Gallery



One of the highlights at the ESRI UC was the Map Gallery, which showcased maps submitted by GIS users and organisations around the world. SLA exhibited 2 maps titled, "Street Map of Singapore", which traced the evolution of Marina Bay, Sengkang and Punggol, and one-north from past to present using historical street maps.

[BACK TO TOP](#)

EDITORIAL TEAM

LAND IS A QUARTERLY ONLINE PUBLICATION BY SINGAPORE LAND AUTHORITY (SLA), 55 NEWTON ROAD #12-01, SINGAPORE 307987.

ADVISORY COMMITTEE CHAIRMAN
SIMON ONG

ADVISORY COMMITTEE
NG SIAU YONG, SOH KHENG PENG & JOHNSON SEAH

CHIEF EDITOR

ADRIAN TAN

CONTRIBUTORS

ADRIAN TAN, ERIC KOH, CHERYL LIM, NG YONG XIANG, RICHARD LOO
TELL US WHAT YOU LIKE TO READ IN LAND
FOR FEEDBACK AND SUGGESTIONS, SUBSCRIPTION AND ADDRESS CHANGES,
WRITE TO ADRIAN TAN AT SLA_LAND_NEWSLETTER@SLA.GOV.SG OR
CALL 1800-3239829

COPYRIGHT © SLA. ALL RIGHTS RESERVED. THE CONTENTS OF LAND MAY BE
REPRODUCED SUBJECT TO APPROVAL BY SLA.



Cambridge Conference 2017

by Eric Koh

The Cambridge Conference 2017 was held from 2-6 July in Oxford, United Kingdom. Attended by more than 100 global participants, the Conference saw presentations by 35 senior leaders from a diverse mix of backgrounds spanning government land administration, geospatial, geomatics and surveying, technology and statistics.

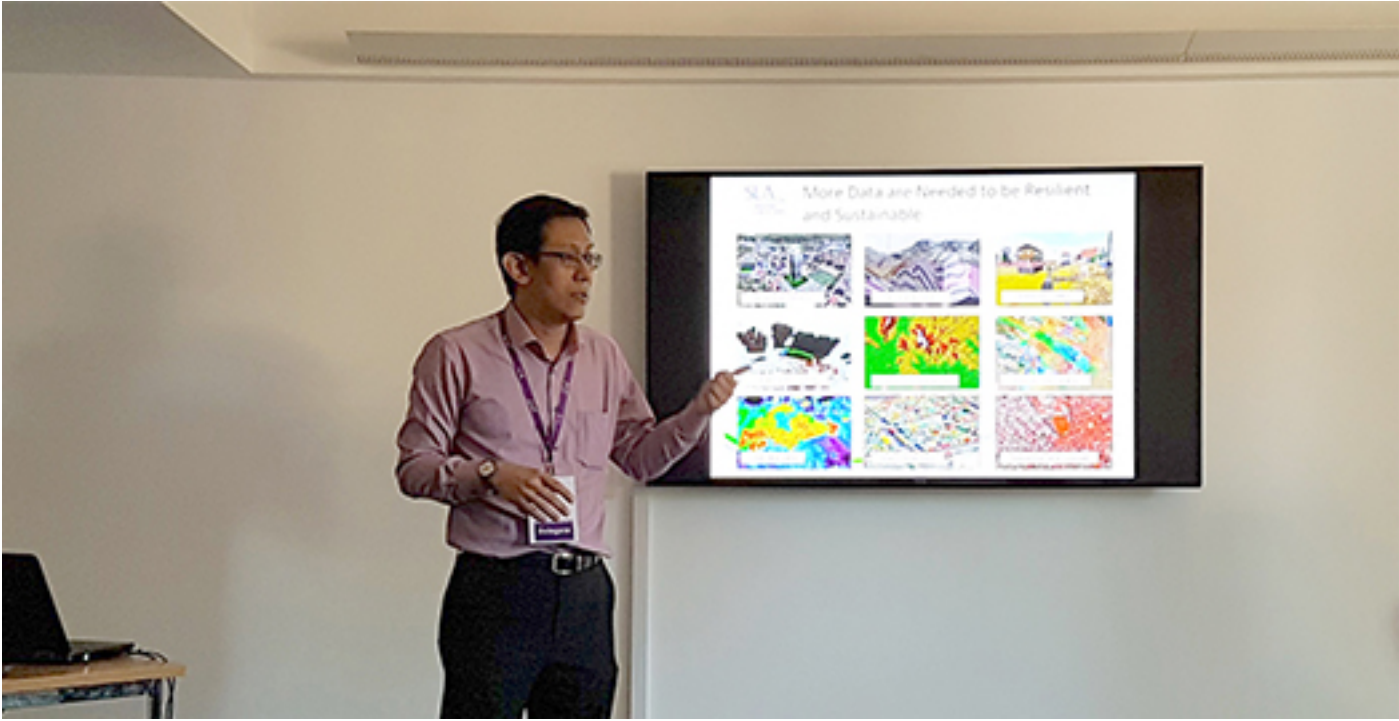
SLA's Chief Executive (CE), Mr Tan Boon Kai was invited by the organiser, Ordnance Survey, to chair a morning plenary of the Conference. The plenary discussed issues such as how geospatial technologies would evolve in the future, unlocking value from open and crowdsourced data and integrating cross-domain technological trends on the use of machine-learning algorithms and unified addresses for 'smart' census.



SLA CE Tan Boon Kai sharing how Virtual Singapore can benefit citizens in a Virtual Stat

CE also shared Singapore's experience in building Virtual Singapore, a national 3D mapping project, and how national mapping and geospatial organisations can tap on geospatial information to better support citizen services in the future.

During the conference, Dr Victor Khoo, Senior Deputy Director, Land Survey Division co-chaired a Workshop with Professor Yaron Felus (Chief Scientist, Survey of Israel) titled 'Feeding the Geospatial needs of a city in 2027'. The participants discussed the need for more accurate and high-quality data to support the Smart Cities of the future, how cities can derive actionable intelligence from data, and the roles that the private sector and citizens could play, while balancing the need to uphold privacy and security of citizens.



Dr Victor Khoo presenting on the geospatial data needs of Smart Cities of the future



Invited delegates and speakers at the Cambridge Conference 2017 (Source: Ordnance Survey)

BACK TO TOP ▲

STAR STORY

SIGHTS AND SOUNDS

HAPPENINGS

COMMUNITY AND US



Black & White - Our Homemade Heritage

by Adrian Tan



The Black and White houses (B&Ws) were built by the British Colonial Government in the 1900s for top ranking British officials, high court judges and plantation owners. These were subsequently handed over to the Singapore Government after Independence. Today, most of these remaining B&Ws are managed by the Singapore Land Authority (SLA) and put to adaptive reuse, breathing new life to these charming and iconic heritage gems.



With more than a century of history, the B&Ws have become more than just a physical presence. Each B&W house has its own character and story to tell. The B&Ws served as a record book detailing the stories of tenants and occupants past and present. Through these stories, we get a glimpse of the lives of occupants who lived across different eras, separated by time yet tied together by the building they each once called home.

As the stories continue and pages are added on, the SLA set out to document and capture these stories in our publication, Black & White - Our Homemade Heritage.

Visit www.sla.gov.sg to read the e-book.

BACK TO TOP ▲

EDITORIAL TEAM

LAND IS A QUARTERLY ONLINE PUBLICATION BY SINGAPORE LAND AUTHORITY (SLA), 55 NEWTON ROAD #12-01, SINGAPORE 307987.

ADVISORY COMMITTEE CHAIRMAN
SIMON ONG

ADVISORY COMMITTEE
NG SIAU YONG, SOH KHENG PENG & JOHNSON SEAH

CHIEF EDITOR

ADRIAN TAN

CONTRIBUTORS

ADRIAN TAN, ERIC KOH, CHERYL LIM, NG YONG XIANG, RICHARD LOO
TELL US WHAT YOU LIKE TO READ IN LAND
FOR FEEDBACK AND SUGGESTIONS, SUBSCRIPTION AND ADDRESS CHANGES,
WRITE TO ADRIAN TAN AT SLA_LAND_NEWSLETTER@SLA.GOV.SG OR
CALL 1800-3239829

COPYRIGHT © SLA. ALL RIGHTS RESERVED. THE CONTENTS OF LAND MAY BE REPRODUCED SUBJECT TO APPROVAL BY SLA.

STAR STORY

SIGHTS AND SOUNDS

HAPPENINGS

COMMUNITY AND US



STAR STORY

SIGHTS AND SOUNDS

HAPPENINGS

COMMUNITY AND US

Supporting APSN at "The Social Fairground"

by Cheryl Lim

The Singapore Land Authority (SLA) supported the "The Social Fairground" fundraising event by the Association for Persons with Special Needs (APSN), held at the State property on 25F Paterson Road on 15 July 2017.

Apart from being the venue sponsor for the event which featured charity games, an art market and performances by local artists, 22 SLA volunteers braved the sweltering weather at the charity car wash to raise funds for the beneficiaries.

The event was a success with SLA volunteers working in teams to wash the many cars streaming into the event venue.



SLA volunteers turned up bright and early for the start of the car wash



The volunteers worked hard and had fun during the session



Tired, but SLA volunteers were all smiles, having done their part for charity

[BACK TO TOP](#)

EDITORIAL TEAM

LAND IS A QUARTERLY ONLINE PUBLICATION BY SINGAPORE LAND AUTHORITY (SLA), 55 NEWTON ROAD #12-01, SINGAPORE 307987.

ADVISORY COMMITTEE CHAIRMAN
SIMON ONG

ADVISORY COMMITTEE
NG SIAU YONG, SOH KHENG PENG & JOHNSON SEAH

CHIEF EDITOR

ADRIAN TAN

CONTRIBUTORS

ADRIAN TAN, ERIC KOH, CHERYL LIM, NG YONG XIANG, RICHARD LOO
TELL US WHAT YOU LIKE TO READ IN LAND
FOR FEEDBACK AND SUGGESTIONS, SUBSCRIPTION AND ADDRESS CHANGES,
WRITE TO ADRIAN TAN AT SLA_LAND_NEWSLETTER@SLA.GOV.SG OR
CALL 1800-3239829

COPYRIGHT © SLA. ALL RIGHTS RESERVED. THE CONTENTS OF LAND MAY BE
REPRODUCED SUBJECT TO APPROVAL BY SLA.