



STAR STORY

SIGHTS AND SOUNDS

HAPPENINGS

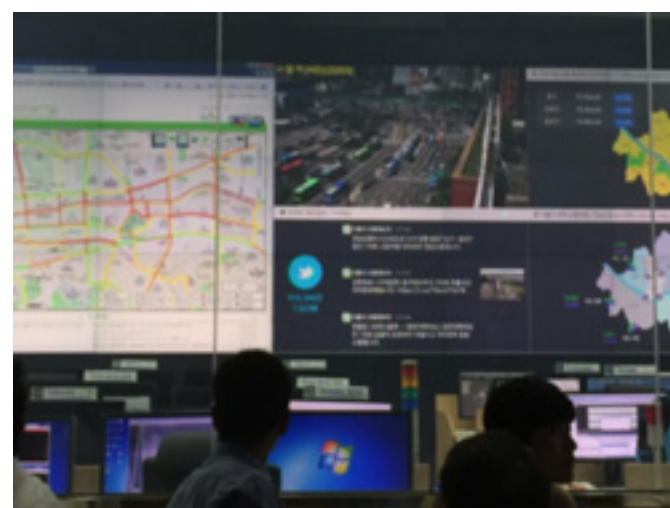
COMMUNITY AND US



## SLA invited to speak at Hong Kong Institute of Surveyors (HKIS) Annual Conference

SLA's national 3D mapping initiative has attracted the attention of global geospatial communities since the completion of the first phase of the project.

READ MORE ►



## Study Trip to Yokohama, Tokyo and Seoul

At the invitation of the Centre for Liveable Cities (CLC), SLA CE Tan Boon Khai led a delegation of 40 officials from the Infrastructure & Environment (I&E) sector on an overseas visit to Yokohama, Tokyo and Seoul from 28 August to 3 September 2016.

READ MORE ►



## Tanglin Village Site Tour and Presentation

SLA was invited to share the development and evolution of Tanglin Village during MOE's annual end-of-year review and planning session on 14 November 2016. The sharing session held at House @ Dempsey was attended by MOE Zonal Director Mrs Ng Ai Lin and Superintendents.

READ MORE ►

### EDITORIAL TEAM

LAND IS A QUARTERLY ONLINE PUBLICATION BY SINGAPORE LAND AUTHORITY (SLA), 55 NEWTON ROAD #12-01, SINGAPORE 307987.

### ADVISORY COMMITTEE CHAIRMAN

SIMON ONG

### ADVISORY COMMITTEE

NG SIAU YONG, SOH KHENG PENG & JOHNSON SEAH

### CHIEF EDITOR

ESTHER CHEW

### CONTRIBUTORS

DR VICTOR KHOO, YAP EAI-SY, CHERYL LIM, CHUA HWEE LING, HOON SUNG LONG, CHO CHUI WAI, QUAH JUN HUI, KIEW JAY  
TELL US WHAT YOU LIKE TO READ IN LAND  
FOR FEEDBACK AND SUGGESTIONS, SUBSCRIPTION AND ADDRESS CHANGES,  
WRITE TO ESTHER CHEW AT [SLA\\_LAND\\_NEWSLETTER@SLA.GOV.SG](mailto:SLA_LAND_NEWSLETTER@SLA.GOV.SG) OR  
CALL 1800-3239829

COPYRIGHT © SLA. ALL RIGHTS RESERVED. THE CONTENTS OF LAND MAY BE REPRODUCED SUBJECT TO APPROVAL BY SLA.





STAR STORY

SIGHTS AND SOUNDS

HAPPENINGS

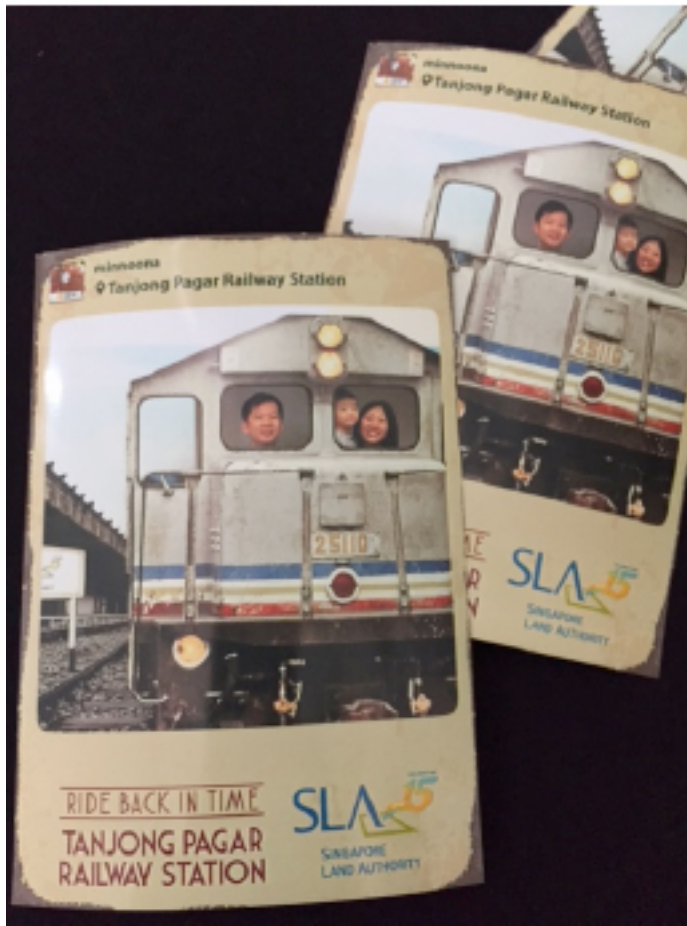
COMMUNITY AND US

## Ride Back in Time at Tanjong Pagar Railway Station Open House!

by Cheryl Lim

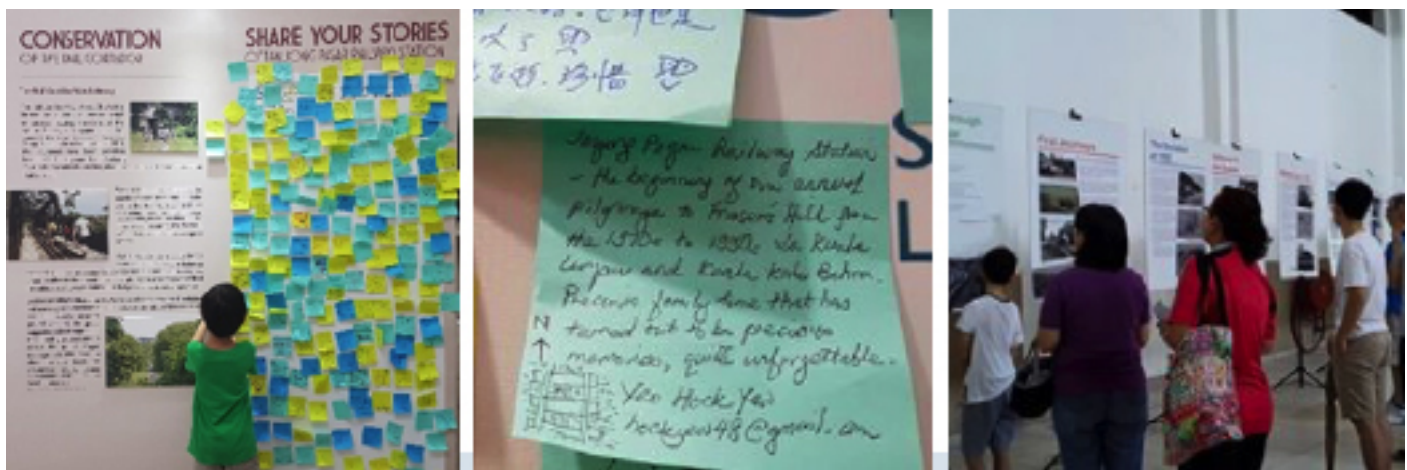


Kaleidoscope workshop and "The Story of the Railway Cat"



Trick-eye photo booth and souvenir photos

SLA presented a walk down memory lane at the Tanjong Pagar Railway Station (TPRS) Open House on Deepavali, 29 October 2016. Visitors had the opportunity to learn more about the history of TPRS and the Rail Corridor through a specially curated exhibition.



Exhibition panels on the history of TPRS and the Rail Corridor

Visitors were also treated to a series of presentations and workshops. Heritage blogger Jerome Lim shared the significance of TPRS with thoughtful details and photos captured through his blog, The Long and Winding Road. A photography presentation offered participants the opportunity to pick up tips on effects and composition to enhance their photo-taking skills. Families were treated to an interactive story-telling session and a kaleidoscope-making workshop.



Presentation by heritage blogger Jerome Lim

The ever popular market along the railway platforms returned with a selection of handmade crafts, delectable food and beverage items at the farmers' and artisan market.



Handmade crafts and delectable food and beverage items at the farmers' and artisan market

Visitors received souvenir photos at the trick-eye photo booth, giving them a slice of TPRS to remember.

[BACK TO TOP](#)

**EDITORIAL TEAM**  
LAND IS A QUARTERLY ONLINE PUBLICATION BY SINGAPORE LAND AUTHORITY (SLA), 55 NEWTON ROAD #12-01, SINGAPORE 307987.

**ADVISORY COMMITTEE CHAIRMAN**  
SIMON ONG

**ADVISORY COMMITTEE**  
NG SIAU YONG, SOH KHENG PENG & JOHNSON SEAH

**CHIEF EDITOR**  
ESTHER CHEW

**CONTRIBUTORS**  
DR VICTOR KHOO, YAP EAI-SY, CHERYL LIM, CHUA HWEE LING, HOON SUNG LONG, CHO CHUI WAI, QUAH JUN HUI, KIEW JAY  
TELL US WHAT YOU LIKE TO READ IN LAND  
FOR FEEDBACK AND SUGGESTIONS, SUBSCRIPTION AND ADDRESS CHANGES, WRITE TO ESTHER CHEW AT [SLA\\_LAND\\_NEWSLETTER@SLA.GOV.SG](mailto:SLA_LAND_NEWSLETTER@SLA.GOV.SG) OR CALL 1800-3239829

COPYRIGHT © SLA. ALL RIGHTS RESERVED. THE CONTENTS OF LAND MAY BE REPRODUCED SUBJECT TO APPROVAL BY SLA.





## SLA invited to speak at Hong Kong Institute of Surveyors (HKIS) Annual Conference

by Dr Victor Khoo

SLA's national 3D mapping initiative has attracted the attention of global geospatial communities since the completion of Phase One of the project and won two international awards to date.

The Hong Kong Institute of Surveyors (HKIS) invited SLA to share more about this innovative project at their Annual Conference held on 10 September 2016. The theme for this year's HKIS Annual Conference was "Kowloon East - Building our Future Model City". The conference examined the relationship between surveyors and Smart City concepts. It also showcased technological applications in everyday life and the latest innovations in surveying for the built environment.

The conference was attended by more than 350 participants comprising government officials, professionals and academics. The Guest-of-Honour was the HKSAR Government, Secretary for Development, Mr. Paul Chan. Other invited speakers included the Director of Lands, Lands Department HKSAR Government, Ms Bernadette Linn.

SLA's presentation covered the technology used to capture and create smart 3D maps in support of our Smart Nation aspirations. It also highlighted the many applications that have benefited from 3D map data.

[BACK TO TOP ▲](#)

### EDITORIAL TEAM

LAND IS A QUARTERLY ONLINE PUBLICATION BY SINGAPORE LAND AUTHORITY (SLA), 55 NEWTON ROAD #12-01, SINGAPORE 307987.

### ADVISORY COMMITTEE CHAIRMAN

SIMON ONG

### ADVISORY COMMITTEE

NG SIAU YONG, SOH KHENG PENG & JOHNSON SEAH

### CHIEF EDITOR

ESTHER CHEW

### CONTRIBUTORS

DR VICTOR KHOO, YAP EAI-SY, CHERYL LIM, CHUA HWEE LING, HOON SUNG LONG, CHO CHUI WAI, QUAH JUN HUI, KIEW JAY  
TELL US WHAT YOU LIKE TO READ IN LAND  
FOR FEEDBACK AND SUGGESTIONS, SUBSCRIPTION AND ADDRESS CHANGES,  
WRITE TO ESTHER CHEW AT [SLA\\_LAND\\_NEWSLETTER@SLA.GOV.SG](mailto:SLA_LAND_NEWSLETTER@SLA.GOV.SG) OR  
CALL 1800-3239829

COPYRIGHT © SLA. ALL RIGHTS RESERVED. THE CONTENTS OF LAND MAY BE REPRODUCED SUBJECT TO APPROVAL BY SLA.

[STAR STORY](#)
[SIGHTS AND SOUNDS](#)
[HAPPENINGS](#)
[COMMUNITY AND US](#)



STAR STORY

SIGHTS AND SOUNDS

HAPPENINGS

COMMUNITY AND US



Real-time traffic conditions

## Study Trip to Yokohama, Tokyo and Seoul

by Chua Hwee Ling



Shared bicycle and pedestrian lanes in Kohoku New Town



Briefing on Otemachi Marunouchi Redevelopment District by Mitsubishi Estate



Restored Tokyo Station



Underground car parking system to free up space above ground for other uses



The delegation at Seoul Human Resource Development Centre



Woomyun Public Housing Development developed by Seoul Housing Corporation



Restored Cheonggyecheon Stream



Use of CCTVs in TOPIS system for real-time monitoring of the transportation network in Seoul City

At the invitation of the Centre for Liveable Cities (CLC), SLA CE Tan Boon Khai led a delegation of 40 officials from the Infrastructure & Environment (I&E) sector on an overseas visit to Yokohama, Tokyo and Seoul from 28 August to 3 September 2016. The study trip was part of the 10th Executive Development and Growth Exchange Programme developed by CLC for the I&E sector as well as other relevant Government agencies. These cities were selected as they shared many similar characteristics as Singapore, such as an ageing population, limited land and high population density.

In Yokohama, the delegation met with the Yokohama City Government and visited the underground district heating and cooling plant constructed to serve the Minato Mirai 21 developments since 1989. Similar to the district cooling network in Marina Bay, the centralised system reduces the space requirement needed compared to individual heating and cooling systems. There is also less carbon emission. The visit ended with a tour of the Kohoku New Town district, where an official from the Urban Development Bureau of Yokohama shared with us the principles and planning considerations in the development of the new town.

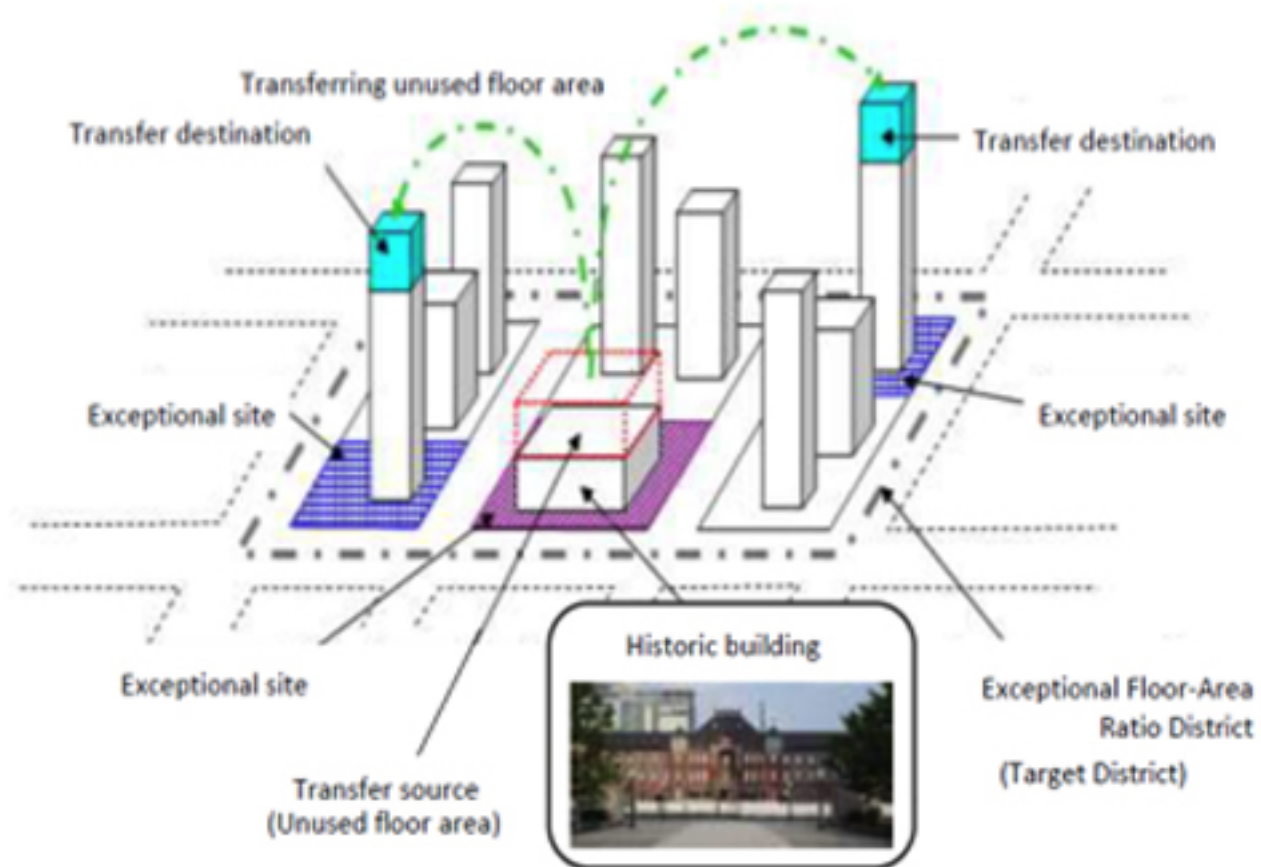


Tour of the underground district heating and cooling plant

The delegation then visited the Tokyo Metropolitan Government, Mitsubishi Estate and the Ministry of Land, Infrastructure, Transport and Tourism to study the regeneration efforts of both the Government and the private developer. We were introduced to the Exceptional Floor Area Ratio (FAR) District System where the Government allowed the transfer of unused FAR to surrounding buildings within the same area.

The FAR transfer system was adopted by Mitsubishi Estate for the restoration of the Tokyo Station in Otemachi Marunouchi Redevelopment District under the public-private partnership model. This was a win-win structure for the public, private FAR seller and buyer as it allowed the Tokyo Station to be restored using the proceeds from the sale of the additional FAR to the nearby developments. To incentivise landowners to free up space for public use, the government also allowed private developers to have additional FAR if they create publicly accessible spaces within their land. The Tokyo visit concluded with a site tour of the Eco-Plaza to learn about the underground parking solutions for bicycles (Eco-Cycle) and cars (Eco-Park).

### Exceptional Floor-Area Ratio District System



Exceptional Floor-Area Ratio District System

In Seoul, the delegation met with the Seoul Institute to understand the challenges in the making of the "Citizen Participatory" 2030 Seoul Plan, a long-term Master plan for Seoul's development. Seoul Institute shared that the vision and key issues of the Seoul Plan were identified by citizens in consultation with experts and planners to strike a balance between the citizens' wishes and feasibility of the plan.

During the two-day visit, the delegation also attended briefings by the Seoul Human Resource Development Centre to study Seoul's sharing economy and transport policies. The delegation went on learning journeys to Woomyun Public Housing Development, Cheonggyecheon Museum, Seoul Safety Integrated Control Centre and Seoul Transport Operation & Information Service (TOPIS).

[BACK TO TOP](#)

**EDITORIAL TEAM**  
LAND IS A QUARTERLY ONLINE PUBLICATION BY SINGAPORE LAND AUTHORITY (SLA), 55 NEWTON ROAD #12-01, SINGAPORE 307987.

**ADVISORY COMMITTEE CHAIRMAN**  
SIMON ONG

**ADVISORY COMMITTEE**  
NG SIAU YONG, SOH KHENG PENG & JOHNSON SEAH

**CHIEF EDITOR**  
ESTHER CHEW

**CONTRIBUTORS**  
DR VICTOR KHOO, YAP EAI-SY, CHERYL LIM, CHUA HWEI LING, HOON SUNG LONG, CHO CHUI WAI, QUAH JUN HUI, KIEW JAY  
TELL US WHAT YOU LIKE TO READ IN LAND  
FOR FEEDBACK AND SUGGESTIONS, SUBSCRIPTION AND ADDRESS CHANGES, WRITE TO ESTHER CHEW AT [SLA\\_LAND\\_NEWSLETTER@SLA.GOV.SG](mailto:SLA_LAND_NEWSLETTER@SLA.GOV.SG) OR CALL 1800-3239829

COPYRIGHT © SLA. ALL RIGHTS RESERVED. THE CONTENTS OF LAND MAY BE REPRODUCED SUBJECT TO APPROVAL BY SLA.



STAR STORY

SIGHTS AND SOUNDS

HAPPENINGS

COMMUNITY AND US



Group photo @ The White Rabbit

## Tanglin Village Site Tour and Presentation

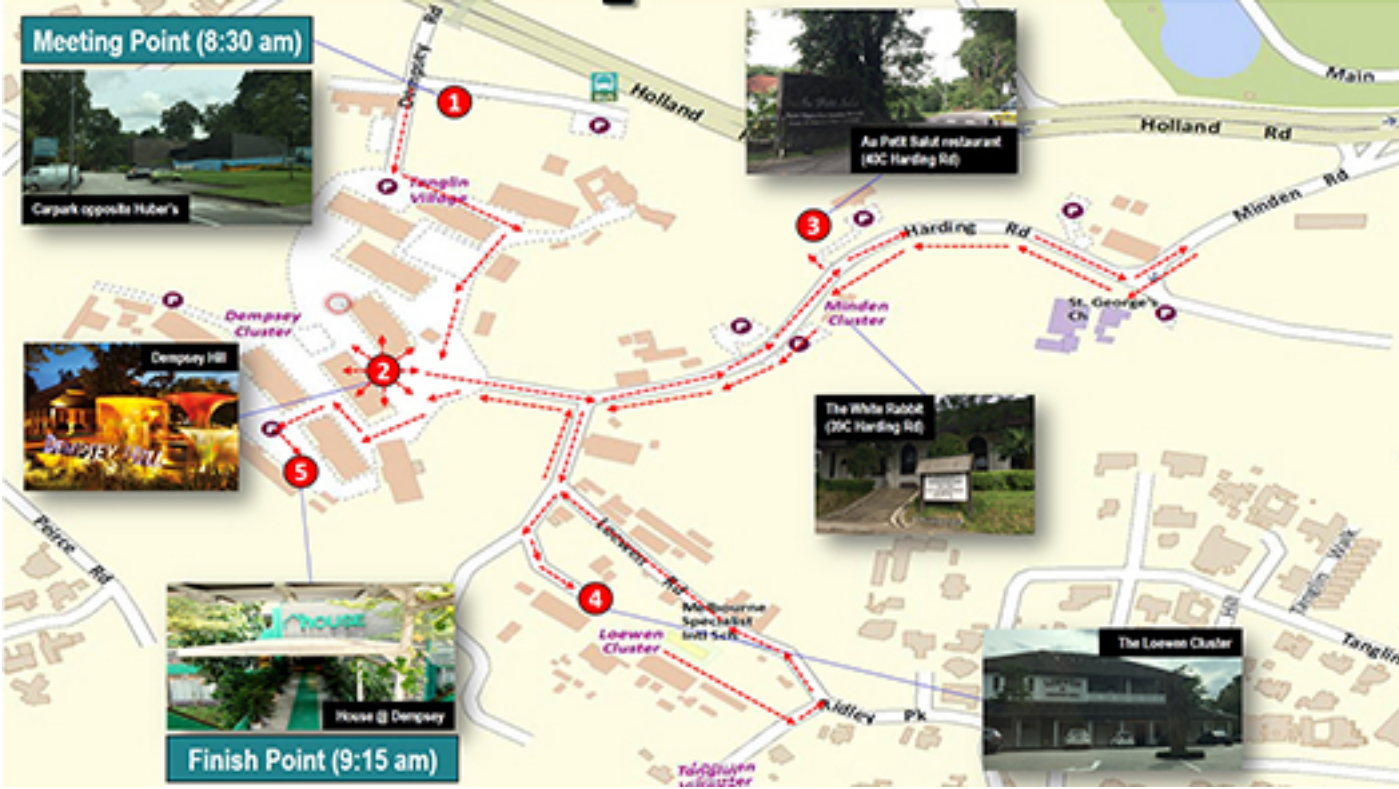
by Yap Eai-Sy, Quah Jun Hui and Kiew Jay



Site tour around Tanglin Village

SLA was invited to share the development and evolution of Tanglin Village during MOE’s annual end-of-year review and planning session on 14 November 2016. The sharing session held at House @ Dempsey was attended by MOE Zonal Director Mrs Ng Ai Lin and Superintendents (Schools-South).

The session kicked off with a site tour which included routes between the large clusters and a walkabout into several key properties to give participants an “on the ground” experience. An illustration of the tour route is shown:



Tour route of Tanglin Village site tour

At each stop, SLA shared the history and heritage of the area, as well as its current operations and future plans.

After the site tour, the group adjourned to House @ Dempsey for a light breakfast followed by a presentation of Tanglin Village covering topics such as:

- Story of Tanglin Village and its development
- Guiding philosophy and values
- Concept – Preserve the past whilst evolving with times
- Challenges and solutions
- Skills and mindset adopted
- Future of Tanglin Village

During the post-presentation discussion, participants contributed ideas on how the profile of Tanglin Village could be improved.



FAQ session



Zonal Director (Schools-South) Mrs Ng Ai Lin presenting SLA with tokens of appreciation



The session concluded with a presentation of tokens of appreciation by Zonal Director (Schools-South) Mrs Ng Ai Lin.

BACK TO TOP





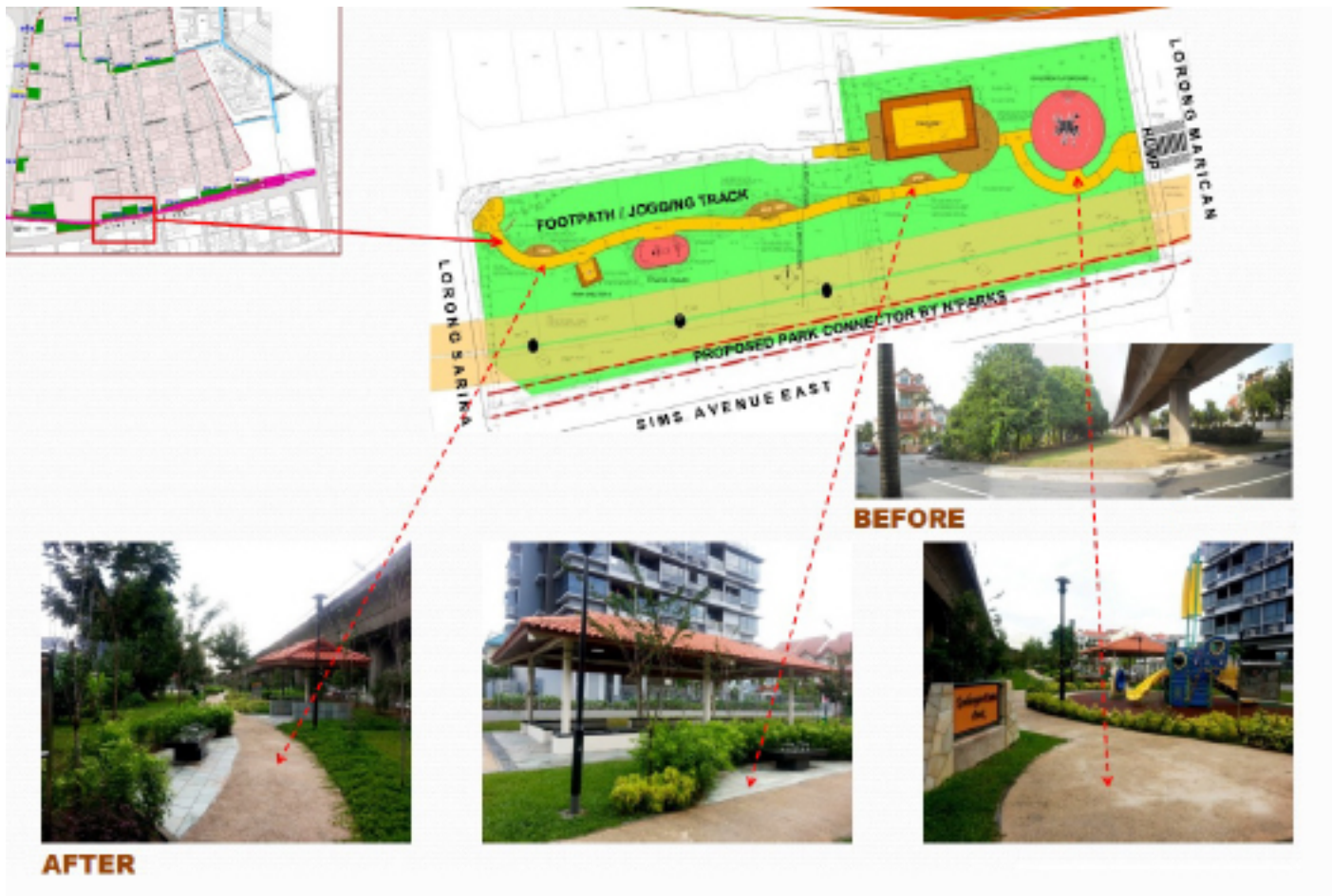
Ms Lilian Chua, Deputy Director (Estate Management) receiving the appreciation plaque from Guest of Honour Mr Tan Chuan Jin, Minister for Social and Family Development at the Completion Ceremony held on 12 Nov 2016

## SLA contributes to Lorong Melayu EUP

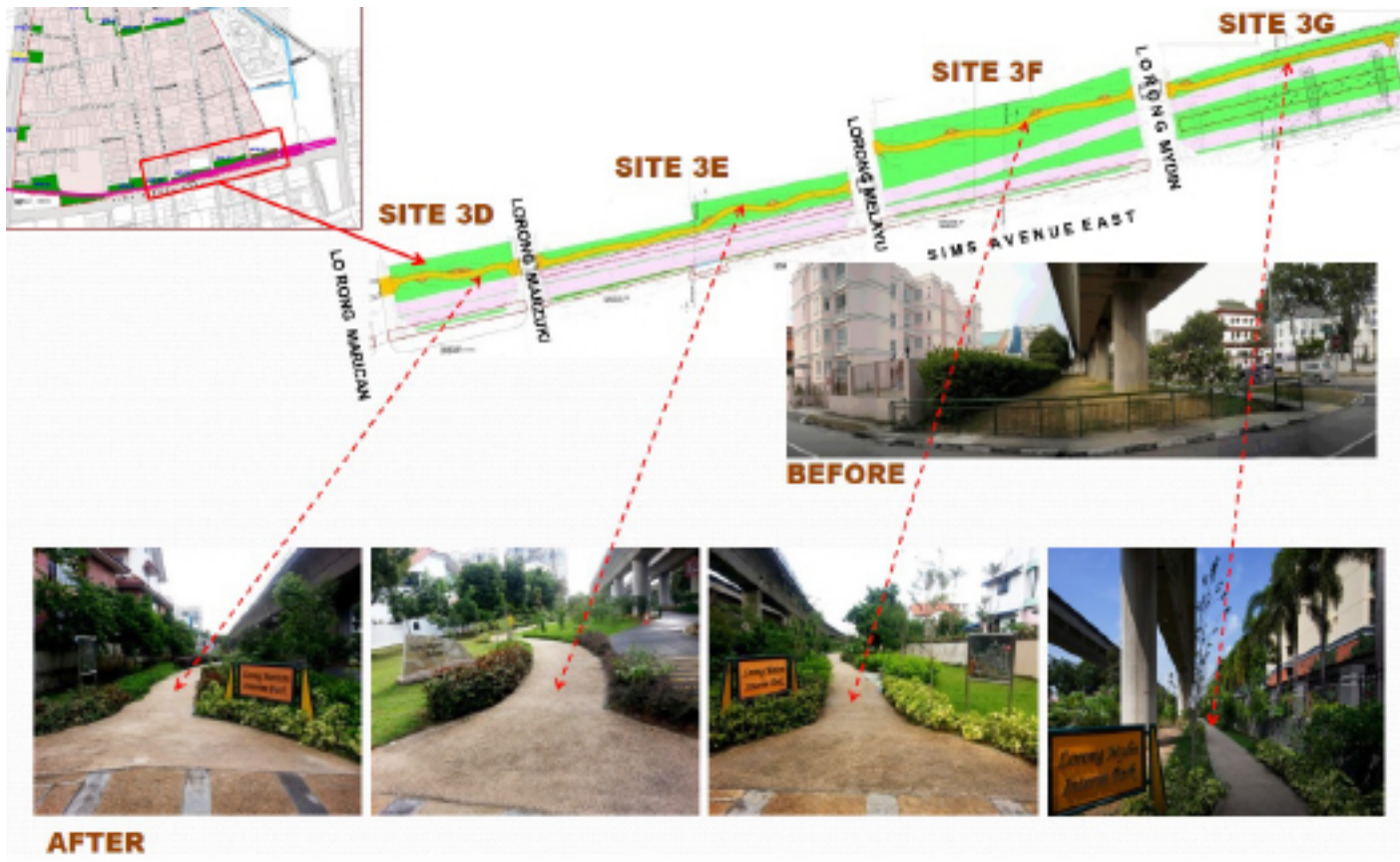
by Hoon Sung Long

The Lorong Melayu Estate, consisting of 1,003 private residential units, was selected by MND for Batch 6 Estate Upgrading Programme (EUP). Working together in partnership, public agencies comprising SLA, NParks, PUB, URA and LTA contributed to the upgrading and improvement for the estate with the provision of new park facilities converted from pockets of vacant State land and an open canal. SLA's participation in the EUP Working Committee was to support, assist and facilitate the implementation of improvement works. At the Completion Ceremony held on 12 November 2016, Mr Tan Chuan Jin, Minister for Social and Family Development expressed his thanks to the agencies for the successful completion of the EUP.

Ms Lilian Chua, Deputy Director (Estate Management) received the appreciation plaque from Minister Tan on behalf of SLA.



Linear park with footpath/jogging track, pavilion and children playground was converted from an open canal



Linear parks along Sims Avenue East was converted from vacant State land



Pocket interim parks at Jalan Ishak, Jalan Awang, Jalan Ismail and Jalan Yasin were converted from vacant State land

[BACK TO TOP](#)

**EDITORIAL TEAM**  
LAND IS A QUARTERLY ONLINE PUBLICATION BY SINGAPORE LAND AUTHORITY (SLA), 55 NEWTON ROAD #12-01, SINGAPORE 307987.

**ADVISORY COMMITTEE CHAIRMAN**  
SIMON ONG

**ADVISORY COMMITTEE**  
NG SIAU YONG, SOH KHENG PENG & JOHNSON SEAH

**CHIEF EDITOR**  
ESTHER CHEW

**CONTRIBUTORS**  
DR VICTOR KHOO, YAP EAI-SY, CHERYL LIM, CHUA HWEE LING, HOON SUNG LONG, CHO CHUI WAI, QUAH JUN HUI, KIEW JAY  
TELL US WHAT YOU LIKE TO READ IN LAND  
FOR FEEDBACK AND SUGGESTIONS, SUBSCRIPTION AND ADDRESS CHANGES, WRITE TO ESTHER CHEW AT [SLA\\_LAND\\_NEWSLETTER@SLA.GOV.SG](mailto:SLA_LAND_NEWSLETTER@SLA.GOV.SG) OR CALL 1800-3239829

COPYRIGHT © SLA. ALL RIGHTS RESERVED. THE CONTENTS OF LAND MAY BE REPRODUCED SUBJECT TO APPROVAL BY SLA.

STAR STORY

SIGHTS AND SOUNDS

HAPPENINGS

COMMUNITY AND US





CE and colleagues hosting Ms. Erna Mochtar, Director-General for Spatial Development Control and Land Tenure, Indonesia, and delegates

STAR STORY

SIGHTS AND SOUNDS

HAPPENINGS

COMMUNITY AND US

## Visit from Indonesian Ministry of Agrarian Affairs and Spatial Planning/National Land Agency

by Cho Chui Wai



CE welcoming the delegates to SLA on 24 November 2016

SLA welcomed a 60-member delegation from the Ministry of Agrarian Affairs and Spatial Planning/National Land Agency of The Republic of Indonesia on 24 November 2016. The Ministry was formed from a merger of Indonesia's Directorate General of Spatial Management (former Ministry of Public Works) and the former National Land Agency in 2015.

SLA CE, DCE and senior management hosted the delegation, led by Ms. Erna Mochtar, Director-General for Spatial Development Control and Land Tenure. The delegates were keen to learn about SLA's land management system in terms of managing and utilising vacant land in Singapore, enabling the use of land information and the implementation of geospatial capabilities.

The healthy exchange during the Q&A session was lively and dynamic, with the delegates posing many questions relating to land administration.



Ms. Erna Mochtar presenting tokens of appreciation to SLA senior management

[BACK TO TOP](#)

### EDITORIAL TEAM

LAND IS A QUARTERLY ONLINE PUBLICATION BY SINGAPORE LAND AUTHORITY (SLA), 55 NEWTON ROAD #12-01, SINGAPORE 307987.

**ADVISORY COMMITTEE CHAIRMAN**  
SIMON ONG

**ADVISORY COMMITTEE**  
NG SIAU YONG, SOH KHENG PENG & JOHNSON SEAH

### CHIEF EDITOR

ESTHER CHEW

### CONTRIBUTORS

DR VICTOR KHOO, YAP EAI-SY, CHERYL LIM, CHUA HWEE LING, HOON SUNG LONG, CHO CHUI WAI, QUAH JUN HUI, KIEW JAY  
TELL US WHAT YOU LIKE TO READ IN LAND  
FOR FEEDBACK AND SUGGESTIONS, SUBSCRIPTION AND ADDRESS CHANGES,  
WRITE TO ESTHER CHEW AT [SLA\\_LAND\\_NEWSLETTER@SLA.GOV.SG](mailto:SLA_LAND_NEWSLETTER@SLA.GOV.SG) OR  
CALL 1800-3239829

COPYRIGHT © SLA. ALL RIGHTS RESERVED. THE CONTENTS OF LAND MAY BE REPRODUCED SUBJECT TO APPROVAL BY SLA.